

LALIQUE



South Kensington · 16 November 2016

CHRISTIE'S



LALIQUE

WEDNESDAY 16 NOVEMBER 2016

AUCTION

Wednesday 16 November 2016
at 2.00 pm Lots 1-129
85 Old Brompton Road
London SW7 3LD

AUCTION CODE AND NUMBER

In sending absentee bids or making enquiries, this sale should be referred to as **ORANGES-12286**

VIEWING

Saturday	12 November	11.00 am – 5.00 pm
Sunday	13 November	11.00 am – 5.00 pm
Monday	14 November	9.00 am – 5.00 pm
Tuesday	15 November	9.00 am – 5.00 pm
Wednesday	16 November	9.00 am – 12 noon

AUCTIONEER

Jeremy Morrison

STORAGE AND COLLECTION

Please refer to the important notice on page 107. Please note that Cadogan Tate's opening hours are Monday to Friday 9am to 5pm, and purchases transferred to their warehouse are not available for collection at weekends.

SERVICES

ABSENTEE AND TELEPHONE BIDS

Tel: +44 (0)20 7752 3225
Fax: +44 (0)20 7581 1403

AUCTION RESULTS

Tel: +44 (0)20 7839 9060
christies.com

CLIENT SERVICES

Tel: +44 (0)20 7839 9060
Fax: +44 (0)20 7389 2869
Email: info@christies.com

POST-SALE SERVICES

Michele Salviato
Post-Sale Coordinator
Payment, Shipping, and Collection
Tel: +44 (0)20 7752 3200
Fax: +44 (0)20 7752 3300
Email: PostSaleUK@christies.com

CONDITIONS OF SALE

This auction is subject to Important Notices, Conditions of Sale and to Reserves

BUYING AT CHRISTIE'S

For an overview of the process, see the Buying at Christie's section.

[15]

christies.com

Front cover: Lots 11, 42 & 116
Opposite: Lot 18 (detail)
Page 2: Lot 4 (detail)
Back cover: Lots 6 & 57



Browse this auction and view real-time results on your iPhone, iPod Touch, iPad and Android

These auctions feature

CHRISTIE'S  **LIVE**

Bid live in Christie's salerooms worldwide
register at christies.com

CHRISTIE'S

View catalogues and leave bids online
at christies.com



INTERNATIONAL DEPARTMENT DESIGN

INTERNATIONAL HEAD

Sonja Ganne
Tel: +33 (0)1 40 76 86 21

EUROPEAN HEAD

Jeremy Morrison
Tel: +44 (0)20 7752 3274

INTERNATIONAL SPECIALIST

Simon Andrews
Tel: +44 (0)20 7752 3380

REGIONAL MANAGING DIRECTOR

Lucy Brown
Tel: +44 (0)20 7752 3167

HEAD OF SALE MANAGEMENT

Matthew Rigg
Tel: +44 (0)20 7389 2221

WORLDWIDE

LONDON

Jeremy Morrison
Simon Andrews
Joy McCall
Raffaella Goffredi
Tel: +44 (0)20 7752 3382

NEW YORK

Carina Villinger
Beth Vilinsky
Vanessa Booher
Jeni Sandberg
Tel: +1 212 636 2240

PARIS

Sonja Ganne
Pauline De Smedt
Emmanuelle Karsenti
Flavien Gaillard
Tel: +33 (0)1 40 76 83 90

SPECIALIST FOR THIS AUCTION

SPECIALIST

Joy McCall
Director
Tel: +44 (0)20 7752 3237

SALE COORDINATOR

Nicholas Challinor-Halford
Tel: +44 (0)20 7752 3382

EMAIL

First initial followed by last name
@christies.com
(eg. Nicholas Challinor-Halford =
nchallinorhalford@christies.com.)
For general enquiries about this auction,
email should be addressed to the
sale coordinator.

INTERNATIONAL CALENDAR DESIGN

LONDON

26 OCTOBER
HISTORICAL DESIGN
KING STREET

26 OCTOBER
DESIGN
KING STREET

16 NOVEMBER
LALIQUE
SOUTH KENSINGTON

ONLINE

18-27 OCTOBER
DESIGN ONLINE

PARIS

22 NOVEMBER
DESIGN

22 NOVEMBER
BUGATTI

23 NOVEMBER
FIRST OPEN HOME

NEW YORK

12 DECEMBER
DESIGN

12 DECEMBER
THE COLLECTION OF
CHIARA AND
FRANCESCO CARRARO

The cover images were shot in Harrods, Knightsbridge, London, and Christie's would like to thank Harrods for making this possible.

COPYRIGHT NOTICE

No part of this catalogue may be reproduced, stored in a retrieval system or transmitted by any form or by any means, electronic, mechanical, photocopying, recording or otherwise, without the prior written permission of Christie's.
© COPYRIGHT, CHRISTIE, MANSON & WOODS LTD. (2016)

*1

**A LUCIEN LELONG - 1 PARFUM N
SCENT BOTTLE**
DESIGNED 1929

clear, frosted and black enamelled,
in aluminium box with red enamelling
bottle 4 in. (10.2 cm.) high;
box 4¾ in. (12 cm.) high
bottle moulded *R. LALIQUE FRANCE*;
box cast *LUCIEN LELONG* (sic)
(nicks to stopper)

£2,000-3,000

\$2,500-3,700

€2,300-3,300



***2**
A CINQ HIRONDELLE TIMEPIECE,
NO. 761

DESIGNED 1920

clear, frosted and black enamelled

6 in. (15.2 cm.) high

moulded *R. LALIQUE*, stamped

AIGUILLES CHEVRON Henri Dittscheim

£2,500-3,500

\$3,100-4,300

€2,800-3,900



*3

A SOUSTONS VASE, NO. 10-902

DESIGNED 1935

clear, frosted and black enamelled

9¼ in. (23.5 cm.) high

stencilled *R. LALIQUE* (later enamelled)

£4,000-6,000

\$5,000-7,400

€4,500-6,600



4

A BAIES VASE, NO. 894

DESIGNED 1924

clear, frosted and black enamelled

11 in. (28 cm.) high

intaglio R. LALIQUE

£7,000-10,000

\$8,700-12,000

€7,800-11,000



5

AN ANTILOPES VASE, NO. 875

DESIGNED 1925

clear, frosted and enamelled

10¾ in. (27.4 cm.) high

intaglio *R. LALIQUE*, engraved *Lalique*

£3,000-5,000

\$3,700-6,200

€3,400-5,500



6

AN ORANGES VASE, NO. 964

DESIGNED 1926

clear, frosted and black enamelled

11¼ in. (28.5 cm.) high

initaglio R. *LALIQUE*

£10,000-15,000

\$13,000-18,000

€12,000-17,000





7
**A GOBELET SIX FIGURINES VASE,
NO. 903**

DESIGNED 1912

clear, frosted and blue stained

7 $\frac{3}{8}$ in. (18.7 cm.) high

engraved *R. Lalique France*

£1,200-1,800

\$1,500-2,200

€1,400-2,000



8
A MONNAIE DU PAPE VASE, NO. 897

DESIGNED 1914

clear, frosted and blue stained

9 in. (22.8 cm.) high

intaglio *R. LALIQUE*

£1,800-2,200

\$2,300-2,700

€2,000-2,400

9

A BISKRA VASE, NO. 1078

DESIGNED 1932

sapphire blue and white stained

12 in. (30.5 cm.) high

stencilled *R. LALIQUE FRANCE*

£3,000-5,000

\$3,700-6,200

€3,400-5,500



***10**

AN ESCARGOT VASE, NO. 931

DESIGNED 1920

electric blue and white stained

8½ in. (21.5 cm.) high

moulded *R. LALIQUE*

£12,000-18,000

\$15,000-22,000

€14,000-20,000



11

AN ESCARGOT VASE, NO. 931

DESIGNED 1920

red

8¼ in. (21 cm.) high

moulded *R. LALIQUE*

£15,000-25,000

\$19,000-31,000

€17,000-28,000





***12**

A CERNAY INKWELL, NO. 437

DESIGNED 1924

clear, frosted and green stained

3½ in. (8 cm.) high;

6¼ in. (16 cm.) diameter

moulded *R. LALIQUE*

£1,000-1,500

\$1,300-1,800

€1,200-1,700



13

AN ESCARGOT VASE, NO. 931

DESIGNED 1920

clear, frosted and green stained

8¾ in. (21.3 cm.) high

moulded *R. LALIQUE*

£2,000-3,000

\$2,500-3,700

€2,300-3,300

14

A SAUGE VASE, NO. 935

DESIGNED 1923

clear, frosted and green stained
10¼ in. (26 cm.) high
engraved *R. Lalique France No. 935*

£1,000-1,500

\$1,300-1,800

€1,200-1,700



15

A MILAN VASE, NO. 1025

DESIGNED 1929

clear, frosted and green stained
11¼ in. (30 cm.) high
stencilled *R. LALIQUE*

£4,000-6,000

\$5,000-7,400

€4,500-6,600





***16**

A MOINEAUX TIMEPIECE ATO B
DESIGNED 1924

clear and frosted, with metal face
6 7/8 in. (15.5 cm.) high;
8 3/8 in. (21.2 cm.) wide
moulded *R. LALIQUE*,
wheel-engraved *R. LALIQUE FRANCE*
(chip)

£1,000-1,500

\$1,300-1,800

€1,200-1,700

***17**

A QUATRE MOINEAUX DU JAPON
ATO F
DESIGNED 1928

clear, frosted and sepia stained,
with stained amboyna to reverse
7 3/8 in. (18.8 cm.) high
wheel-engraved *R. LALIQUE FRANCE*

£2,000-3,000

\$2,500-3,700

€2,300-3,300

*18

**A MARTIN-PECHEURS VASE,
NO. 1923**

DESIGNED 1923

clear, frosted and, sepia and green stained
9½ in. (24 cm.) high
moulded *R. LALIQUE*, engraved *France*
(slight polishing)

£5,000-7,000

\$6,200-8,600

€5,600-7,700





19
**AN INSEPARABLES TIMEPIECE,
NO. 765**

DESIGNED 1926
opalescent and blue stained, painted face
4¼ in. (11 cm.) high
moulded *R. LALIQUE*, engraved *France*
£2,200-2,800 \$2,800-3,400
 €2,500-3,100

20
A PERRUCHES BOWL, NO. 419
DESIGNED 1931

opalescent and grey stained
9¾ in. (24.7 cm.) diameter
stencilled *R. LALIQUE FRANCE*
£2,500-3,500 \$3,100-4,300
 €2,800-3,900



21

A CEYLAN VASE, NO. 905

DESIGNED 1924

opalescent and green stained

9½ in. (24 cm.) high

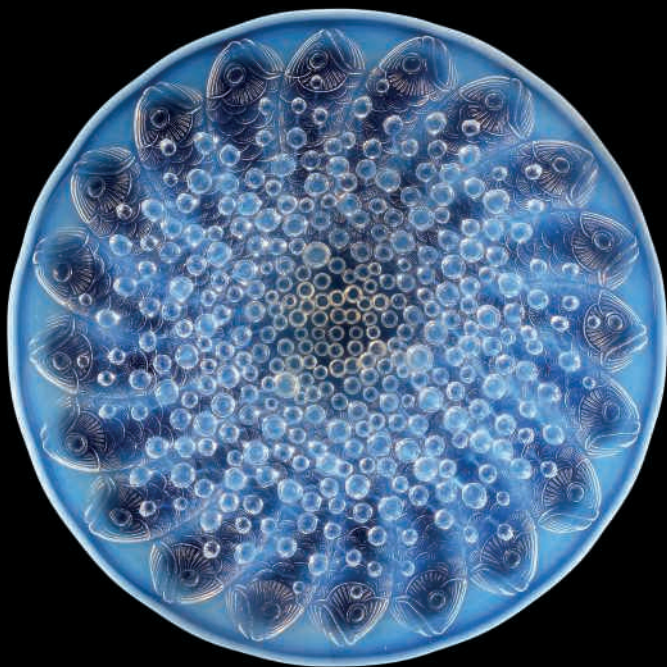
stencilled *R. LALIQUE FRANCE*

£6,000-8,000

\$7,400-9,800

€6,700-8,800





22
A ROSCOFF SHALLOW BOWL,
NO. 10-383
DESIGNED 1932

opalescent
14½ in. (36 cm.) diameter
stencilled *R. LALIQUE FRANCE*
£1,500-2,500 \$1,900-3,100
 €1,700-2,800



***23**
A MARTIGUES BOWL, NO. 377
DESIGNED 1920

opalescent
14½ in. (36.8 cm.) diameter
moulded *R. LALIQUE,*
wheel-engraved *FRANCE*
£2,000-3,000 \$2,500-3,700
 €2,300-3,300

***24**

A MADAGASCAR BOWL, NO. 403

DESIGNED 1928

opalescent

13¼ in. (33.5 cm.) diameter

later wheel-engraved *R. LALIQUE FRANCE*

£5,000-7,000

\$6,200-8,600

€5,600-7,700





■*25

A FEUILLES DE CHARMES

CHANDELIER, NO. 2262

DESIGNED 1921

clear and frosted

19¾ in. (50 cm.) diameter

moulded *R. LALIQUE*

£12,000-18,000

\$15,000-22,000

€14,000-20,000

27

A POISSONS VASE, NO. 925

DESIGNED 1921

double cased red

9½ in. (24.2 cm.) high

moulded R. LALIQUE,

engraved R. Lalique France (restored)

£2,000-3,000

\$2,500-3,700

€2,300-3,300



***28**
A POISSONS LAMP AND SHADE,
NO. 2171
DESIGNED 1931

clear, frosted and blue stained,
chromed base and mount
12¼ in. (31 cm.) high
stencilled *R. LALIQUE FRANCE*

£6,000-8,000

\$7,400-9,800

€6,700-8,800





29
A PETITE LIBELLULE CAR MASCOT, NO. 1144

DESIGNED 1928

clear and frosted,
 with Breves Galleries mount
 6¼ in. (16 cm.) long
 moulded *LALIQUE FRANCE*,
 engraved *R. Lalique France*, mount
 stamped *BREVES GALLERIES*
KNIGHTSBRIDGE SW3 PAT No.309301

£1,500-2,500 \$1,900-3,100
 €1,700-2,800



30
A FAUCON CAR MASCOT, NO. 1124

DESIGNED 1925

clear and frosted
 6¼ in. (16 cm.) high
 moulded *R. LALIQUE*, wheel-engraved
FRANCE, engraved *No. 1124*

£1,500-2,500 \$1,900-3,100
 €1,700-2,800

31
A PERCHE PAPERWEIGHT, NO. 1158

DESIGNED 1929

butterscotch
 6¼ in. (15.8 cm.) long
 wheel-engraved *R. LALIQUE FRANCE*,
 moulded *LALIQUE*

£1,800-2,200 \$2,300-2,700
 €2,000-2,400

***32**
A FORMOSE VASE, NO. 934

DESIGNED 1924

cased jade green
 6¾ in. (17.2 cm.) high
 intaglio *R. LALIQUE*

£4,000-6,000 \$5,000-7,400
 €4,500-6,600





33
A FORMOSE VASE, NO. 934
DESIGNED 1924

clear and frosted
6¾ in. (17 cm.) high
stencilled R. *LALIQUE*

£1,000-1,500

\$1,300-1,800

€1,200-1,700



***34**
A CIGOGNES VASE, NO. 965
DESIGNED 1926

clear, frosted and green stained
7 in. (17.8 cm.) high
intaglio R. *LALIQUE*, engraved *France*

£2,500-3,500

\$3,100-4,300

€2,800-3,900

***35**

A FRISE AIGLES VASE, E

DESIGNED 1911

clear, frosted and grey stained

11¼ in. (31 cm.) high

wheel-engraved *R. LALIQUE*

£6,000-8,000

\$7,400-9,800

€6,700-8,800





36
A GROUPE DE SIX MOINEAUX,
NO. 1218

DESIGNED 1933

clear and frosted
 3 3/8 in. (8 cm.) high; 11 3/4 in. (30 cm.) wide
 stencilled *R. LALIQUE FRANCE*

£2,000-3,000

\$2,500-3,700

€2,300-3,300

37
A DEUX PIGEONS VASE, NO. 1066
DESIGNED 1931

clear, frosted and sepia stained
 8 1/2 in. (20.6 cm.) high
 stencilled in reverse *R. LALIQUE FRANCE*

£1,200-1,800

\$1,500-2,200

€1,400-2,000

38
A MOINEAUX I CHANDELIER,
NO. 2298

DESIGNED 1931

clear and frosted, with ceiling rose
 14 1/2 in. (37 cm.) square
 stencilled *R. LALIQUE FRANCE* (chips)

£3,000-5,000

\$3,700-6,200

€3,400-5,500







39
A DAHLIA ET PAPILLON CENDRIER,
NO. 318

DESIGNED 1931

clear, frosted and sepia stained; together
 a Varèse cendrier, No. 307, designed
 1929, clear, frosted and blue stained, and
 an Archers cendrier, No. 278, designed
 1922, black

6½ in. (16.5 cm.) wide and smaller
 stencilled *R. LALIQUE FRANCE*; the
 latter two engraved *R. Lalique France*

(3)

£1,500-2,500

\$1,900-3,100

€1,700-2,800

***40**

A DEUX AMOURS TIMEPIECE, A
DESIGNED 1920

clear, frosted and blue stained
6 in. (15.2 cm.) high
moulded *R. LALIQUE*

£2,500-3,500

\$3,100-4,300

€2,800-3,900



***41**

A SIX HIRONDELLES PERCHEES
TIMEPIECE, NO. 763

DESIGNED 1920

clear, frosted and blue stained
6 in. (15.2 cm.) high
moulded *R. LALIQUE*,
engraved *R. Lalique France*

£1,000-1,500

\$1,300-1,800

€1,200-1,700





42

A BRESSE VASE, NO. 1073

DESIGNED 1931

amber and white stained

4 in. (10.2 cm.) high

stencilled *R. LALIQUE FRANCE*

£2,000-3,000

\$2,500-3,700

€2,300-3,300



43

A DENTELE VASE, NO. 943

DESIGNED 1912

clear, frosted and sepia stained

7½ in. (19 cm.) high

(tiny nicks to top rim)

£3,000-5,000

\$3,700-6,200

€3,400-5,500

44

A CHAMOIS VASE, NO. 1075

DESIGNED 1931

amber and yellow stained
4¾ in. (12 cm.) high
stencilled *R. LALIQUE FRANCE*

£2,000-3,000

\$2,500-3,700

€2,300-3,300



45

A SAUGE VASE, NO. 935

DESIGNED 1923

amber and white stained
10¼ in. (26 cm.) high
intaglio *R. LALIQUE*

£1,800-2,200

\$2,300-2,700

€2,000-2,400





***46**

A SERPENTS INKWELL, NO. 432

DESIGNED 1920

amber

6¼ in. (15.9 cm.) diameter

engraved *R. Lalique*

£2,000-3,000

\$2,500-3,700

€2,300-3,300



47

TWO LAITERONS VASES, NO. 1072

DESIGNED 1931

amber and white stained

3½ in. (8 cm.) high

stencilled *R. LALIQUE FRANCE*

(2)

£2,000-3,000

\$2,500-3,700

€2,300-3,300

48

A SERPENT VASE, NO. 896

DESIGNED 1924

amber and white stained

10½ in. (26.8 cm.) high

intaglio R. *LALIQUE*

£15,000-25,000

\$19,000-31,000

€17,000-28,000



49

AN ARCHERS VASE, NO. 893

DESIGNED 1921

clear, frosted and grey stained

10¾ in. (27.3 cm.) high

engraved *R. Lalique France No. 893*

£3,000-5,000

\$3,700-6,200

€3,400-5,500



*50

A SERPENT VASE, NO. 896

DESIGNED 1924

clear, frosted and grey stained

10½ in. (26.7 cm.) high

intaglio R. LALIQUE

£10,000-15,000

\$13,000-18,000

€12,000-17,000





***51**
A GRANDE NUE SOCLE LIERRE
STATUETTE, NO. 836
DESIGNED 1919

clear, frosted and sepia stained,
on ebonised stand
16 $\frac{3}{8}$ in. (41.5 cm.) high
engraved *R. Lalique France No. 836*

£10,000-15,000	\$13,000-18,000
	€12,000-17,000



*52

A SOURCE DE LA FONTAINE
TELPHUSE, NO. 849
DESIGNED 1924

clear and frosted,
on later walnut plinth
20½ in. (52 cm.) high
engraved *R. Lalique* (chips)

£15,000-20,000

\$19,000-25,000

€17,000-22,000

Δ53

A BACCHANTES VASE, NO. 997

DESIGNED 1927

clear, frosted and sepia stained,
on later patinated bronze base
overall 12¾ in. (32.4 cm.) high;
vase 9¾ in. (24.7 cm.) high
stencilled *R. LALIQUE FRANCE* (nick)

£5,000-8,000

\$6,200-9,800

€5,600-8,800



*54

**AN OISEAU DE FEU CENTREPIECE,
NO. 1111**

DESIGNED 1922

clear and frosted, with later cast
patinated bronze illuminating base

17 in. (43.2 cm.) high
intaglio R. LALIQUE

£20,000-30,000

\$25,000-37,000

€23,000-33,000





■55
**A PAIR OF STOCKHOLM
PLAFONNIERS, NO. 2478**
DESIGNED 1927

clear and frosted
14¼ in. (36.2 cm.) diameter
moulded R. LALIQUE FRANCE

£4,000-6,000

\$5,000-7,400
€4,500-6,600

***56**

A TERPSICHORE VASE, NO. 10-911

DESIGNED 1937

clear and frosted
8 in. (20.3 cm.) high;
11½ in. (29.5 cm.) wide
stencilled *R. LALIQUE FRANCE*

£10,000-15,000

\$13,000-18,000

€12,000-17,000



57

A NIVERNAIS VASE, NO. 1005

DESIGNED 1927

teal green

6¾ in. (17.2 cm.) high

stencilled *R. LALIQUE FRANCE*

£1,500-2,500

\$1,900-3,100

€1,700-2,800



58

A PIERREFONDS VASE, NO. 990

DESIGNED 1926

amber

6½ in. (15.5 cm.) high;

13½ in. (34.2 cm.) wide

wheel-engraved *R. LALIQUE FRANCE*,

engraved *No. 990*

£3,000-5,000

\$3,700-6,200

€3,400-5,500





■*59

**AN EGLANTINES CHANDELIER,
NO. 2464**

DESIGNED 1926

clear, frosted and grey stained
35½ in. (90 cm.) high;
25½ in. (65 cm.) diameter

£12,000-18,000

\$15,000-22,000

€14,000-20,000



***60**

AN EGLANTINES MIRROR, NO. 685

DESIGNED 1921

clear, frosted and sepia stained,

with enamelled white metal

17 in. (43.2 cm.) diameter

wheel-engraved *R. LALIQUE FRANCE*

£7,000-9,000

\$8,700-11,000

€7,800-9,900



***61**

A MARLY TIMEPIECE, NO. 734

DESIGNED 1931

clear, frosted and enamelled,
with Omega movement

7 in. (17.8 cm.) high

stencilled *R. LALIQUE*, stamped *OMEGA*

£1,500-2,500

\$1,900-3,100

€1,700-2,800



***62**

A MUGUET TIMEPIECE, NO. 733

DESIGNED 1931

clear, frosted and blue stained,
with Omega movement

8½ in. (22 cm.) high

stencilled *R. LALIQUE*, stamped *OMEGA*

£2,000-3,000

\$2,500-3,700

€2,300-3,300

■*63

**AN EGLANTINES CHANDELIER,
NO. 2464**

DESIGNED 1926

clear and frosted
33½ in. (85 cm.) high;
25½ in. (65 cm.) diameter

£12,000-18,000 \$15,000-22,000

€14,000-20,000





64

64
FOUR DEUX CHARMES
SUSPENSION APPLIQUES, C
 DESIGNED 1924

clear and frosted
 (nicks)
 glass 3½ x 1½ in. (9 x 4 cm.)
 £500-700

(4)
 \$620-860
 €560-770



65

65
SIX EGLANTINES CHANDELIER
FLANGES, NO. 2464
 DESIGNED 1926

clear and frosted
 (nicks)
 5 in. (12.6 cm.) high;
 6 in. (15.2 cm.) wide
 £1,000-1,500

(6)
 \$1,300-1,800
 €1,200-1,700

66
FIVE VARIOUS CEILING ROSES
 clear and frosted
 (nicks)

17½ in. (44.5 cm.) diameter
 and smaller (5)
 £1,000-1,500 \$1,300-1,800
 €1,200-1,700



66

67
A MADRID CHANDELIER FLANGE,
NO. 2291
DESIGNED 1930

clear and frosted
11¼ in. (30 cm.) high

£1,000-1,500

\$1,300-1,800

€1,200-1,700





■*68
**A PAIR OF BANDES DES ROSES
CHANDELIERS, NO. 2271**
DESIGNED 1924

clear, frosted and sepia stained
20 $\frac{7}{8}$ in. (53 cm.) diameter

£10,000-15,000

\$13,000-18,000

€12,000-17,000

69

AN ORAN VASE, NO. 999

DESIGNED 1927

clear and frosted

10½ in. (26.8 cm.) high

wheel-engraved *R. LALIQUE FRANCE*

(nicks)

£8,000-12,000

\$9,900-15,000

€8,900-13,000





70

A COQUILLES VASE, NO. 932

DESIGNED 1920

cased opalescent and grey stained

7¼ in. (18.4 cm.) high

engraved *R. Lalique France No. 932*

£1,000-1,500

\$1,300-1,800

€1,200-1,700



71

A MURES VASE, NO. 1058

DESIGNED 1930

opalescent

7⅝ in. (18.7 cm.) high

stencilled *R. LALIQUE FRANCE*

(pinhead nicks to foot rim)

£1,800-2,200

\$2,300-2,700

€2,000-2,400

72

A MONTMORENCY VASE, NO. 1050

DESIGNED 1930

opalescent

7 $\frac{1}{8}$ in. (20 cm.) high

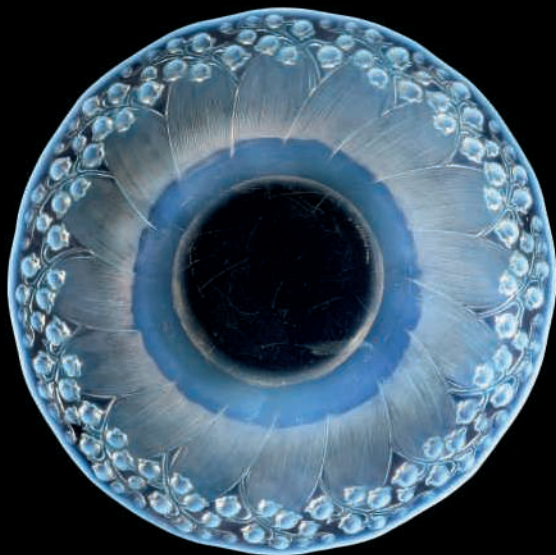
stencilled *R. LALIQUE FRANCE*

£3,000-5,000

\$3,700-6,200

€3,400-5,500





73
A MUGUET PLATE, NO. 10-382
DESIGNED 1932

opalescent and blue stained
13¼ in. (33.5 cm.) diameter
stencilled *R. LALIQUE FRANCE*

£2,000-3,000 \$2,500-3,700
€2,300-3,300



74
A MUGUET BOWL, NO. 417
DESIGNED 1931

opalescent and blue stained
9¼ in. (23.5 cm.) diameter
stencilled *R. LALIQUE FRANCE*

£2,000-3,000 \$2,500-3,700
€2,300-3,300



75
**A MUGUET SHALLOW BOWL,
NO. 416**
DESIGNED 1931

opalescent and blue stained
12¾ in. (31.5 cm.) diameter
stencilled in reverse *R. LALIQUE FRANCE*

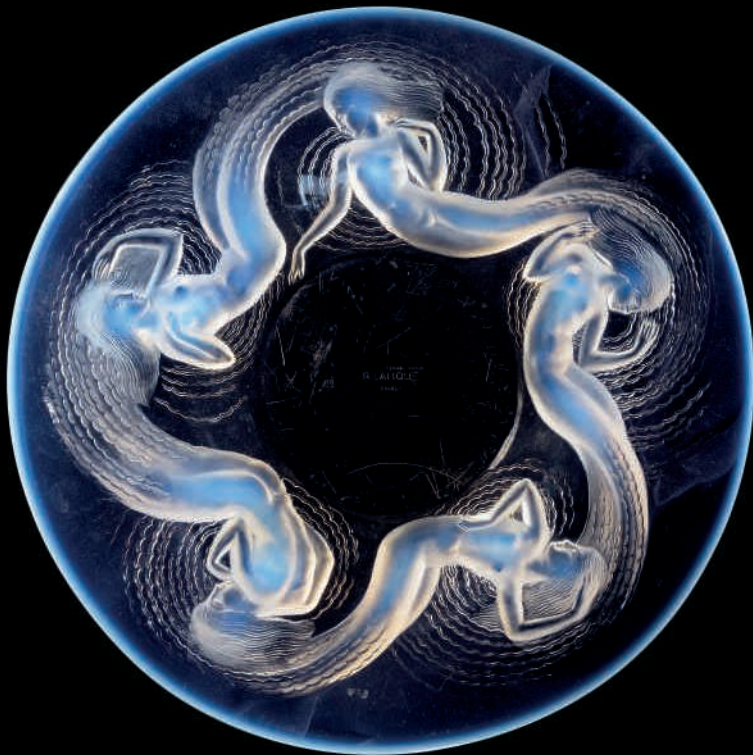
£2,000-3,000 \$2,500-3,700
€2,300-3,300



76
A VIOLEE MAINS JOINTES
STATUETTE, NO. 828
DESIGNED 1919

opalescent and blue stained
10¾ in. (27.3 cm.) high
engraved *R. Lalique France*

£10,000-15,000	\$13,000-18,000
	€12,000-17,000



***77**

A CALYPSO BOWL, NO. 413

DESIGNED 1930

opalescent

14½ in. (36.8 cm.) diameter

stencilled *R. LALIQUE FRANCE*

£1,500-2,000

\$1,900-2,500

€1,700-2,200



***78**

AN ESCARGOTS INKWELL, NO. 433

DESIGNED 1920

clear, frosted and blue stained

6¼ in. (16 cm.) diameter

engraved *R. Lalique France*

£2,000-3,000

\$2,500-3,700

€2,300-3,300

*79

A SUZANNE STATUETTE, NO. 833

DESIGNED 1925

opalescent, on later illuminating

patinated bronze base

11 in. (27.8 cm.) high

moulded *R. LALIQUE* (polishing to base)

(2)

£10,000-15,000

\$13,000-18,000

€12,000-17,000





***80**
A D'ORSAY - 11 ROSES
SCENT BOTTLE
DESIGNED 1914

clear, frosted and blue stained
4 in. (10.2 cm.) high
intaglio *LALIQUE*

£1,800-2,200	\$2,300-2,700
	€2,000-2,400



81
A COTY - 20 AU COEUR DES CALICES
SCENT BOTTLE
DESIGNED 1913

pale blue
2¾ in. (7 cm.) high
intaglio *COTY AU COEUR DES CALICES*
(nick to stopper)

£1,800-2,200	\$2,300-2,700
	€2,000-2,400



***82**
A MOLINARD - 4 CALENDAL
SCENT BOTTLE
DESIGNED 1930

clear, frosted and blue stained
4¾ in. (11.8 cm.) high
engraved *Molinar Paris Lali que France*

£1,000-1,500	\$1,300-1,800
	€1,200-1,700

***83**

**A ROGER ET GALLET - 15 LE JADE
SCENT BOTTLE**

DESIGNED 1926

cased jade green

3½ in. (8 cm.) high

moulded *LE JADE*, R. L. FRANCE,

intaglio *ROGER ET GALLET PARIS*

£1,800-2,200

\$2,300-2,700

€2,000-2,400



84

**A KLYTIA INSTITUT DE
BEAUTE - PRENDS-MOI PRES DE TOI
SCENT BOTTLE**

DESIGNED 1935

clear and frosted

3¾ in. (9.5 cm.) high

engraved *R. Lalique France*, intaglio

KLYTIA, stencilled *INSTITUT DE*

BEAUTE 26 PLACE VENDOME PARIS

FRANCE, one with applied paper label

BEAUTE DE LIMPERATRICE 310 BLANC

(2)

£3,000-5,000

\$3,700-6,200

€3,400-5,500





PROPERTY FROM RENE LALIQUE'S COMPANION
 CLAUDINE-JULIETTE LE MESNIL, THENCE BY DESCENT
 (LOTS 85-92)

85

**PORTRAIT OF CLAUDINE-JULIETTE
 LE MESNIL**

1896-1899

pastel on buff paper, laid on board;
 together with a portrait of René Claude
 Le Mesnil pastel on buff paper,
 laid on board
 former 17½ x 14 in. (44.4 x 35.5 cm.) framed;
 13¾ x 10 in. (35 x 25.4 cm.) sheet
 latter 24 x 20 in. (61 x 50.8 cm.) framed;
 16½ x 12½ in. (41.9 x 31.7 cm.) sheet

(2)

£4,000-6,000

\$5,000-7,400

€4,500-6,600

LITERATURE:

S. Barten, *René Lalique - Schmuck under
 Objects D'Art, 1890-1910*, Munich, 1989,
 No. 1768, illustrated.



86
RENE LALIQUE, ATTRIBUTED TO
PORTRAIT OF CLAUDINE-JULIETTE
LE MESNIL

pastel on buff paper, laid on board
20½ x 15½ in. (52 x 39.4 cm.) framed
16½ x 11½ in. (42 x 31.7 cm.) sheet

£3,000-5,000

\$3,700-6,200

€3,400-5,500



87

**RENE LALIQUE, ATTRIBUTED TO
A DESIGN FOR A FRAME AND
PORTRAIT**

pencil, watercolour and gilt highlights
on paper, mounted on board
13 x 11¼ in. (33 x 29.9 cm.) framed
5¾ x 4½ in. (14.5 x 11.5 cm.) sheet

£1,000-1,500

\$1,300-1,800

€1,200-1,700



88

**RENE LALIQUE, ATTRIBUTED TO
TWO DESIGNS**

pastel on buff paper, on titled *NOEL*
and the other *L'ILLUST*

Noel 22¼ x 17 in. (56.5 x 43.2 cm.) framed;

17¼ x 12½ in. (43.8 x 21.7 cm.) sheet

L'illust 21 x 17 in. (53.3 x 43.2 cm.) framed;

16¼ x 12¾ in. (41.2 x 32.4 cm.) sheet

(2)

£4,000-6,000

\$5,000-7,400

€4,500-6,600



89

A SAUTERELLE PENDANT

1908-1910

gold claw-set mount with bronze reverse, set with green glass and dark green staining, on later gold chain
pendant 1½ in. (3.8 cm.) high
stamped *LALIQUE*

£2,000-3,000

\$2,500-3,700

€2,300-3,300

LITERATURE:

S. Barten, *René Lalique - Schmuck unter Objects D'Art, 1890-1910*, Munich, 1989, No. 1204, another example illustrated as a brooch.



90

**RENE LALIQUE, ATTRIBUTED TO
A BLE SEAL**

CIRCA 1900

gold, plique à jour enamel and light brown hard-stone matrix carved with an ear of corn
2 in. (5 cm.) high

£1,000-1,500

\$1,300-1,800

€1,200-1,700



91

A MUSIQUE ET DANSE BUCKLE

CIRCA 1910

gold and raised turquoise enamel with darker accents, clear enamel to reverse and gilt buckle
2⅞ in. (7.3 cm.) high

£1,500-2,500

\$1,900-3,100

€1,700-2,800

LITERATURE:

S. Barten, *René Lalique - Schmuck unter Objects D'Art, 1890-1910*, Munich, 1989, No. 1473, design drawing illustrated.



92
RENE LALIQUE, ATTRIBUTED TO
AN OPEN FACE FOB WATCH
CIRCA 1900

gold and enamel, with plique à jour, the gilt movement with keyless jewelled-lever escapement, silvered engine-turned dial with black Breguet-style numerals and subsidiary seconds

1 5/8 in. (4.2 cm.) high
stamped 1895

£10,000-15,000

\$13,000-18,000

€12,000-17,000



(alternate view)



VARIOUS PROPERTIES

***93**

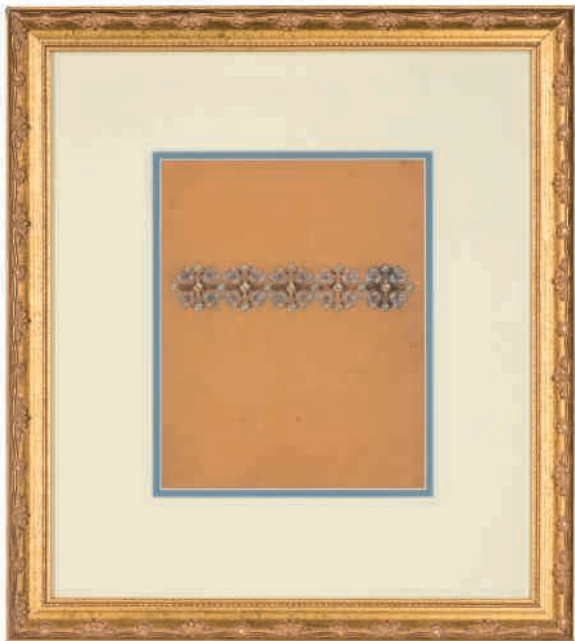
**RENE LALIQUE, ATTRIBUTED TO
A DESIGN FOR A BROOCH
OR PENDANT**

pencil, pen, black ink, watercolour and
body colour on paper, laid on board
18½ x 15½ in. (47 x 39.4 cm.) framed

£1,000-1,500

\$1,300-1,800

€1,200-1,700



***94**

**RENE LALIQUE, ATTRIBUTED TO
A DESIGN FOR A BRACELET**

pencil, pen, black ink, watercolour and
body colour on paper

19¼ x 17¼ in. (49 x 43.8 cm.) framed

11 x 8¾ in. (28 x 22.2 cm.) sheet

97 VIII 30, 353 in pencil to reverse

£1,000-1,500

\$1,300-1,800

€1,200-1,700

***95**

**RENE LALIQUE, ATTRIBUTED TO
A DESIGN FOR A BUCKLE**

pencil, pen, black ink, watercolour and
body colour on paper, laid on board
19½ x 17½ in. (49.5 x 44.5 cm.) framed

£1,000-1,500

\$1,300-1,800

€1,200-1,700



***96**

**RENE LALIQUE, ATTRIBUTED TO
DESIGN FOR A CHOKER**

pencil, pen, black, ink and body colour
on paper

19¼ x 16½ in. (49 x 42 cm.) framed

11 x 8½ in. (28 x 21.5 cm.) sheet

£1,000-1,500

\$1,300-1,800

€1,200-1,700





97

A SOURIS SEAL, NO. 185

DESIGNED 1912

clear, frosted and grey stained

4¼ in. (11 cm.) high

engraved *R. Lalique France No. 185*

£3,500-4,500

\$4,400-5,500

€3,900-5,000



98

AN AIGLE SEAL, NO. 184

DESIGNED 1912

clear, frosted and grey stained

3½ in. (9 cm.) high

engraved *R. Lalique France No. 175 (sic)*

£2,500-3,500

\$3,100-4,300

€2,800-3,900

99

A SOURIS INKWELL, NO. 429

DESIGNED 1912

comprising stand, inkwell and seal
stopper clear, frosted and grey stained
7 in. (17.8 cm.) high overall;
8¾ in. (22.3 cm.) sq.

inkwell wheel-engraved *R. LALIQUE*,
stopper engraved *R. Lalique*

(3)

£6,000-8,000

\$7,400-9,800

€6,700-8,800



100

TEN PISSENLIT BOWLS, NO. 3104

DESIGNED 1924

clear and frosted

4 $\frac{7}{8}$ in. (12.8 cm.) diameter

engraved *R. Lalique France No. 3104*

(10)

£1,200-1,800

\$1,500-2,200

€1,400-2,000



101

A PANEL

clear and frosted, with silvered back

17½ x 10⅞ in. (44.5 x 27.7 cm.);

1 in. (2.6 cm.) deep

(nicks)

£5,000-7,000

\$6,200-8,600

€5,600-7,700





102
A BOXED SET OF BARR SWIZZLERS,
NO. 3893
 DESIGNED 1932
 clear and frosted
 swizzlers 7 $\frac{7}{8}$ in. (12.5 cm.) long
 box printed *LALIQUE 11, RUE ROYALE*
PARIS

(12)
 £1,500-2,500 \$1,900-3,100
 €1,700-2,800



***103**
A DEUX DANSEUSES CARAFE,
NO. 3153
 DESIGNED 1912

clear, frosted and sepia stained
 13 $\frac{1}{2}$ in. (34.2 cm.) high
 engraved *Laliqve*
 £2,000-3,000 \$2,500-3,700
 €2,300-3,300

***104**

A PAN LAMP, NO. 2174

DESIGNED 1931

clear and frosted, white metal stand

14½ in. (37 cm.) high

stencilled *R. LALIQUE FRANCE*

£6,000-8,000

\$7,400-9,800

€6,700-8,800





■105
MARC LALIQUE 1900-1977
A CACTUS TABLE
DESIGNED 1951

clear and frosted
29 in. (73.8 cm.) high;
118 in. (300 cm.) long;
54 in. (137 cm.) wide

£20,000-30,000

\$25,000-37,000

€23,000-33,000





■*106
A SYRACUSE CHANDELIER,
NO. 2476
DESIGNED 1927

clear and frosted, with central bulb shade,
suspension rod sheath and ceiling rose
26 in. (66 cm.) high;
20½ in. (52 cm.) diameter
wheel-engraved *R. LALIQUE*,
engraved *France*

£7,000-10,000

\$8,700-12,000

€7,800-11,000



■*107

**A PAIR OF TREVISE CHANDELIERS,
NO. 2473**

DESIGNED 1927

clear and frosted, with central bulb shade,
glass suspension shaft sheath concealing
the metal rod and ceiling rose
25¾ in. (65.5 cm.) high;
14½ in. (37 cm.) diameter
one stencilled *R. LALIQUE*,
one wheel-engraved *R. LALIQUE*
and engraved *France*

(2)

£10,000-15,000

\$13,000-18,000

€12,000-17,000





■*108

**A ILE DE FRANCE CHANDELIER,
NO. 2302**

DESIGNED 1935

clear and frosted

49¼ in. (125 cm.) high;

14 in. (35.5 cm) wide

stencilled *R. LALIQUE FRANCE*

£8,000-12,000

\$9,900-15,000

€8,900-13,000

109

**A PAIR OF OXFORD APPLIQUES
AND SHADES, NO. 2035**

DESIGNED 1928

clear and frosted, white metal mounts

19¾ in. (50 cm.) high

wheel-engraved *R. LALIQUE FRANCE*

(12)

£15,000-25,000

\$19,000-31,000

€17,000-28,000



110

A SOPHORA VASE, NO. 977

DESIGNED 1926

clear, frosted and sepia stained

10½ in. (26.6 cm.) high

engraved *R. Lalique France*

£2,000-3,000

\$2,500-3,700

€2,300-3,300



■*111

**A LANGUEDOC CHANDELIER,
NO. 2303**

DESIGNED 1935

clear, frosted and sepia stained,
with glass suspension shaft sheath
and ceiling rose

39¼ in. (99.7 cm.) high;

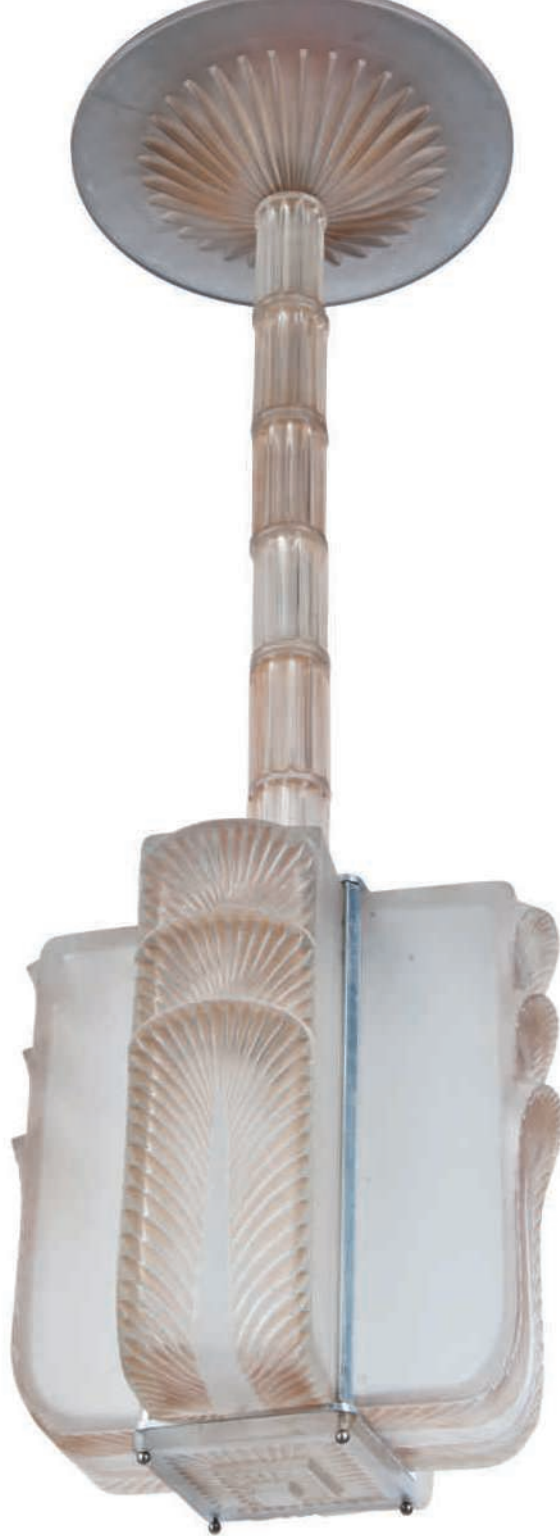
13 in. (33 cm.) wide

stencilled *R. LALIQUE FRANCE*

£8,000-12,000

\$9,900-15,000

€8,900-13,000





***112**
FOUR NORMANDIE APPLIQUES,
NO. 2061

DESIGNED 1935

clear and frosted
12½ in. (30.5 cm.) high; 4 in. (10.1 cm.)
wide; 4¾ in. (12 cm.) deep

(4)

£5,000-8,000

\$6,200-9,800

€5,600-8,800

■*113

**A PALMES CHANDELIER,
NO. 2306/B**

DESIGNED 1929

clear and frosted

43¾ in. (111 cm.) high;

17¼ in. (44 cm.) diameter

ceiling rose 12¾ in. (32 cm.) diameter

wheel-engraved *R. LALIQUE FRANCE*

£10,000-15,000

\$13,000-18,000

€12,000-17,000





***114**
FIVE FOUGERES APPLIQUES,
NO. 2013
DESIGNED 1924
clear and frosted,
with metal wall brackets
11¼ in. (30 cm.) high

(5)

£2,000-3,000

\$2,500-3,700

€2,300-3,300



■*115
**A NOISETIER CHANDELIER,
NO. 2269**
DESIGNED 1924

clear, frosted and sepia stained,
with ceiling rose

39¾ in. (100 cm.) drop;

31½ in. (80 cm.) diameter

intaglio R. LALIQUE

£10,000-15,000

\$13,000-18,000

€12,000-17,000

116

A MONNAIE DU PAPE VASE, NO. 897

DESIGNED 1914

cased opalescent and sepia stained

9¼ in. (23.5 cm.) high

intaglio *R. LALIQUE*

£2,000-3,000

\$2,500-3,700

€2,300-3,300



117

A LANGUEDOC VASE, NO. 1021

DESIGNED 1929

cased opalescent

9 in. (22.8 cm.) high

stencilled *R. LALIQUE*

£4,000-6,000

\$5,000-7,400

€4,500-6,600



***118**

AN ARCHERS VASE, NO. 893

DESIGNED 1921

cased opalescent and blue stained

10¾ in. (27.3 cm.) high

engraved *R. Lalique France No. 893*

£4,000-6,000

\$5,000-7,400

€4,500-6,600



119

A BACCHANTES VASE, NO. 997

DESIGNED 1927

opalescent and blue stained

9½ in. (24 cm.) high

wheel-engraved *R. LALIQUE FRANCE*

£18,000-22,000

\$23,000-27,000

€20,000-24,000





120

A BELIERS VASE, NO. 904

DESIGNED 1925

opalescent

7¾ in. (19.7 cm.) high

wheel-engraved *R. LALIQUE FRANCE*,
engraved *No. 904* (nick to foot)

£1,000-1,500

\$1,300-1,800

€1,200-1,700



121

A LIEVRES VASE, NO. 942

DESIGNED 1923

cased opalescent and blue stained

6 in. (15.2 cm.) high

engraved *R. Lalique France No. 942*

£1,000-1,500

\$1,300-1,800

€1,200-1,700

122

A DOMREMY VASE, NO. 979

DESIGNED 1926

double cased opalescent
and grey stained
8¾ in. (22.3 cm.) high
engraved *R. Lalique France*

£1,500-2,500

\$1,900-3,100

€1,700-2,800



123

A PLUMES VASE, NO. 944

DESIGNED 1920

cased opalescent and sepia stained
8½ in. (21.5 cm.) high
moulded *R. LALIQUE*

£1,000-1,500

\$1,300-1,800

€1,200-1,700



***124**

A CEYLAN VASE, NO. 905

DESIGNED 1924

opalescent and green stained
9½ in. (24 cm.) high
wheel-engraved *R. LALIQUE*,
engraved *No. 905*

£3,000-5,000

\$3,700-6,200

€3,400-5,500



*125

A PERRUCHES VASE, NO. 876

DESIGNED 1919

cased opalescent

10½ in. (26.7 cm.) high

intaglio R. *LALIQUE* (tiny nicks)

£8,000-12,000

\$9,900-15,000

€8,900-13,000



126

AN ARCHERS VASE, NO. 893

DESIGNED 1921

grey and white stained

10 $\frac{5}{8}$ in. (27 cm.) high

moulded *R. LALIQUE*, engraved *Lalique*

£3,000-5,000

\$3,700-6,200

€3,400-5,500



127

A PERRUCHES VASE, NO. 876

DESIGNED 1919

emerald green and white stained

10 in. (25.5 cm.) high

engraved *R. Lalique*, moulded *LALIQUE*

£12,000-18,000

\$15,000-22,000

€14,000-20,000



128

A PERRUCHES VASE, NO. 876

DESIGNED 1919

amber and white stained

10 in. (25.5 cm.) high

wheel-engraved *R. LALIQUE*

£5,000-7,000

\$6,200-8,600

€5,600-7,700



129

A PERRUCHES VASE, NO. 876

DESIGNED 1919

cased red and white stained

10 in. (25.5 cm.) high

engraved *R. Lalique France No. 876*

£7,000-10,000

\$8,700-12,000

€7,800-11,000



CONDITIONS OF SALE • BUYING AT CHRISTIE'S

CONDITIONS OF SALE

These Conditions of Sale and the Important Notices and Explanation of Cataloguing Practice set out the terms on which we offer the lots listed in this catalogue for sale. By registering to bid and/or by bidding at auction you agree to these terms, so you should read them carefully before doing so. You will find a glossary at the end explaining the meaning of the words and expressions coloured in bold.

Unless we own a lot (A symbol, Christie's acts as agent for the seller.

A BEFORE THE SALE

1 DESCRIPTION OF LOTS

(a) Certain words used in the catalogue description have special meanings. You can find details of these on the page headed 'Important Notices and Explanation of Cataloguing Practice' which forms part of these terms. You can find a key to the Symbols found noted to certain catalogue entries under the section of the catalogue called 'Symbols Used in this Catalogue'.

(b) Our description of any lot in the catalogue, any condition report and any other statement made by us (whether orally or in writing) about any lot, including about its nature or condition, artist, period, materials, approximate dimensions or provenance are our opinion and not to be relied upon as a statement of fact. We do not carry out in-depth research of the sort carried out by professional historians and scholars. All dimensions and weights are approximate only.

2 OUR RESPONSIBILITY FOR OUR DESCRIPTION OF LOTS

We do not provide any guarantee in relation to the nature of a lot apart from our **authenticity warranty** contained in paragraph E2 and to the extent provided in paragraph I below.

3 CONDITION

(a) The condition of lots sold in our auctions can vary widely due to factors such as age, previous damage, restoration, repair and wear and tear. Their nature means that they will rarely be in perfect condition. Lots are sold 'as is', in the condition they are in at the time of the sale, without any representation or warranty or assumption of liability of any kind as to condition by Christie's or by the seller.

(b) Any reference to condition in a catalogue entry or in a condition report will not amount to a full description of condition, and images may not show a lot clearly. Colours and shades may look different in print or on screen to how they look on physical inspection. Condition reports may be available to help you evaluate the condition of a lot. Condition reports are provided free of charge as a convenience to our buyers and are for guidance only. They offer our opinion but they may not refer to all faults, inherent defects, restoration, alteration or adaptation because our staff are not professional restorers or conservators. For that reason they are not an alternative to examining a lot in person or taking your own professional advice. It is your responsibility to ensure that you have requested, received and considered any condition report.

4 VIEWING LOTS PRE-AUCTION

(a) If you are planning to bid on a lot, you should inspect it personally or through a knowledgeable representative before you make a bid to make sure that you accept the description and its condition. We recommend you get your own advice from a restorer or other professional adviser.

(b) Pre-auction viewings are open to the public free of charge. Our specialists may be available to answer questions at pre-auction viewings or by appointment.

5 ESTIMATES

Estimates are based on the condition, rarity, quality and provenance of the lots and on prices recently paid at auction for similar property. Estimates can change. Neither you, nor anyone else, may rely on any estimates as a prediction or guarantee of the actual selling price of a lot or its value for any other purpose. Estimates do not include the buyer's premium or any applicable taxes.

6 WITHDRAWAL

Christie's may, at its option, withdraw any lot at any time prior to or during the sale of the lot. Christie's has no liability to you for any decision to withdraw.

7 JEWELLERY

(a) Coloured gemstones (such as rubies, sapphires and emeralds) may have been treated to improve their look. The methods used include heating and oiling. These methods are accepted by the international jewellery trade but may make the gemstone less strong and/or require special care over time.

(b) All types of gemstones may have been improved by some method. You may request a gemmological report for any item which does not have a report if the request is made to us at least three weeks before the date of the auction and you pay the fee for the report.

(c) We do not obtain a gemmological report for every gemstone sold in our auctions. Where we do get gemmological reports from internationally accepted gemmological laboratories, such reports will be described in the catalogue. Reports from American gemmological laboratories will describe any improvement or treatment to the gemstone. Reports from European gemmological laboratories will describe any improvement or treatment only if we request that they do so, but will confirm when no improvement or treatment has been made. Because of differences in approach and technology, laboratories may not agree whether a particular gemstone has been treated, the amount of treatment or whether treatment is permanent. The gemmological laboratories will only report on the improvements or treatments known to the laboratories at the date of the report.

(d) For jewellery sales, estimates are based on the information in any gemmological report or, if no report is available, assume that the gemstones may have been treated or enhanced.

8 WATCHES & CLOCKS

(a) Almost all clocks and watches are repaired in their lifetime and may include parts which are not original. We do not give a warranty that any individual component part of any watch is authentic. Watchbands described as 'associated' are not part of the original watch and may not be authentic. Clocks may be sold without pendulums, weights or keys.

(b) As collectors' watches often have very fine and complex mechanisms, a general service, change of battery or further repair work may be necessary, for which you are responsible. We do not give a warranty that any watch is in good working order. Certificates are not available unless described in the catalogue.

(c) Most wristwatches have been opened to find out the type and quality of movement. For that reason, wristwatches with water resistant cases may not be waterproof and we recommend you have them checked by a competent watchmaker before use.

Important information about the sale, transport and shipping of watches and watchbands can be found in paragraph H(2).

B REGISTERING TO BID

1 NEW BIDDERS

(a) If this is your first time bidding at Christie's or you are a returning bidder who has not bought anything from any of our salerooms within the last two years you must register at least 48 hours before an auction to give us enough time to process and approve your registration. We may, at our option, decline to permit you to register as a bidder. You will be asked for the following:

(i) for individuals: Photo identification (driving licence, national identity card or passport) and, if not shown on the ID document, your current address (for example, a current utility bill or bank statement);

(ii) for corporate clients: Your Certificate of Incorporation or equivalent document(s) showing your name and registered address together with documentary proof of directors and beneficial owners; and

(iii) for trusts, partnerships, offshore companies and other business structures, please contact us in advance to discuss our requirements.

(b) We may also ask you to give us a financial reference and/or a deposit as a condition of allowing you to bid. For help, please contact our Credit Department on +44 (0)20 7839 9060.

2 RETURNING BIDDERS

We may at our option ask you for current identification as described in paragraph B(i) (a) above, a financial reference or a deposit as a condition of allowing you to bid. If you have not bought anything from any of our salerooms in the last two years or if you want to spend more than on previous occasions, please contact our Credit Department on +44 (0)20 7839 9060.

3 IF YOU FAIL TO PROVIDE THE RIGHT DOCUMENTS

If in our opinion you do not satisfy our bidder identification and registration procedures including, but not limited to completing any anti-money laundering and/or anti-terrorism financing checks we may require to our satisfaction, we may refuse to register you to bid, and if you make a successful bid, we may cancel the contract for sale between you and the seller.

4 BIDDING ON BEHALF OF ANOTHER PERSON

(a) **As authorised bidder.** If you are bidding on behalf of another person, that person will need to complete the registration requirements above before you can bid, and supply a signed letter authorising you to bid for him/her.

(b) **As agent for an undisclosed principal:** If you are bidding as an agent for an undisclosed principal (the ultimate buyer(s)), you accept personal liability to pay the purchase price and all other sums due. Further, you warrant that:

(i) you have conducted appropriate customer due diligence on the ultimate buyer(s) of the lot(s) in accordance with any and all applicable anti-money laundering and sanctions laws, consent to us relying on this due diligence, and you will retain for a period of not less than five years the documentation and records evidencing the due diligence;

(ii) you will make such documentation and records evidencing your due diligence promptly available for immediate inspection by an independent third-party auditor upon our written request to do so. We will not disclose such documentation and records to any third-party unless (1) it is already in the public domain, (2) it is required to be disclosed by law, or (3) it is in accordance with anti-money laundering laws;

(iii) the arrangements between you and the ultimate buyer(s) are not designed to facilitate tax crimes;

(iv) you do not know, and have no reason to suspect, that the funds used for settlement are connected with, the proceeds of any criminal activity or that the ultimate buyer(s) are under investigation, charged with or convicted of money laundering, terrorist activities or other money laundering predicate crimes.

(v) you accept personal liability to pay the purchase price and all other sums due unless it has been agreed in writing with Christie's before commencement of the auction that the bidder is acting as an agent on behalf of a named third party acceptable to Christie's and that Christie's will only seek payment from the named third party.

5 BIDDING IN PERSON

If you wish to bid in the saleroom you must register for a numbered bidding paddle at least 30 minutes before the auction. You may register online at www.christies.com or in person. For help, please contact the Credit Department on +44 (0)20 7839 9060.

6 BIDDING SERVICES

The bidding services described below are a free service offered as a convenience to our clients and Christie's is not responsible for any error (human or otherwise), omission or breakdown in providing these services.

(a) Phone Bids

Your request for this service must be made no later than 24 hours prior to the auction. We will accept bids by telephone for lots only if our staff are available to take the bids. If you need to bid in a language other than in English, you must arrange this well before the auction. We may record telephone bids. By bidding on the telephone, you are agreeing to us recording your conversations. You also agree that your telephone bids are governed by these Conditions of Sale.

(b) Internet Bids on Christie's Live™

For certain auctions we will accept bids over the Internet. Please visit www.christies.com/livebidding and click on the 'Bid Live' icon to see details of how to watch, hear and bid at the auction from your computer. As well as these Conditions of Sale, internet bids are governed by the Christie's LIVE™ terms of use which are available on www.christies.com.

(c) Written Bids

You can find a Written Bid Form at the back of our catalogues, at any Christie's office or by choosing the sale and viewing the lots online at www.christies.com. We must receive your completed Written Bid Form at least 24 hours before the auction. Bids must be placed in the currency of the saleroom. The auctioneer will take reasonable steps to carry out written bids at the lowest possible price, taking into account the reserve. If you make a written bid on a lot which does not have a reserve and there is no higher bid than yours, we will bid on your behalf at around 50% of the low estimate or, if lower, the amount of your bid. If we receive written bids on a lot for identical amounts, and at the auction these are the highest bids on the lot, we will sell the lot to the bidder whose written bid we received first.

C AT THE SALE

1 WHO CAN ENTER THE AUCTION

We may, at our option, refuse admission to our premises or decline to permit participation in any auction or to reject any bid.

2 RESERVES

Unless otherwise indicated, all lots are subject to a reserve. We identify lots that are offered without reserve with the symbol next to the lot number. The reserve cannot be more than the lot's low estimate.

3 AUCTIONEER'S DISCRETION

The auctioneer can act at his sole option:

- refuse any bid;
- move the bidding backwards or forwards in any way he or she may decide, or change the order of the lots;
- withdraw any lot;
- divide any lot or combine any two or more lots;
- reopen or continue the bidding even after the hammer has fallen; and
- in the case of error or dispute and whether during or after the auction, to continue the bidding, determine the successful bidder, cancel the sale of the lot, or reoffer and resell any lot. If any dispute relating to bidding arises during or after the auction, the auctioneer's decision in exercise of this option is final.

4 BIDDING

The auctioneer accepts bids from:

- bidders in the saleroom;
- telephone bidders, and internet bidders through 'Christie's LIVE™' (as shown above in Section B6); and
- written bids (also known as absentee bids or commission bids) left with us by a bidder before the auction.

5 BIDDING ON BEHALF OF THE SELLER

The auctioneer may, at his or her sole option, bid on behalf of the seller up to but not including the amount of the reserve either by making consecutive bids or by making bids in response to other bidders. The auctioneer will not identify these as bids made on behalf of the seller and will not make any bid on behalf of the seller at or above the reserve. If lots are offered without reserve, the auctioneer will generally decide to open the bidding at 50% of the low estimate for the lot. If no bid is made at that level, the auctioneer may decide to go backwards to his or her sole option until a bid is made, and then continue up from that amount. In the event that there are no bids on a lot, the auctioneer may deem such lot unsold.

6 BID INCREMENTS

Bidding generally starts below the low estimate and increases in steps (bid increments). The auctioneer will decide at his or her sole option where the bidding should start and the bid increments. The usual bid increments are shown for guidance only on the Written Bid Form at the back of this catalogue.

7 CURRENCY CONVERTER

The saleroom video screens (and Christie's LIVE™) may show bids in some other major currencies as well as sterling. Any conversion is for guidance only and we cannot be bound by any rate of exchange unless we decide to go backwards to his or her sole option or otherwise, omission or breakdown in providing these services.

8 SUCCESSFUL BIDS

Unless the auctioneer decides to use his or her discretion as set out in paragraph C3 above, when the auctioneer's hammer strikes, we have accepted the last bid. This means a contract for sale has been formed between the seller and the successful bidder. We will issue an invoice only to the registered bidder who made the successful bid. While we send out invoices by post and/or email after the auction, we do not accept responsibility for telling you whether or not your bid was successful. If you have bid by written bid, you

should contact us by telephone or in person as soon as possible after the auction to get details of the outcome of your bid to avoid having to pay unnecessary storage charges.

9 LOCAL BIDDING LAWS

You agree that when bidding in any of our sales that you will strictly comply with all local laws and regulations in force at the time of the sale for the relevant sale site.

D THE BUYER'S PREMIUM, TAXES AND ARTISTS' RESALE ROYALTY

1 THE BUYER'S PREMIUM

In addition to the **hammer price**, the successful bidder agrees to pay us a **buyer's premium** on the **hammer price** of each lot sold. On all **lots** we charge 25% of the **hammer price** up to and including £100,000, 20% on that part of the **hammer price** over £100,000 and up to and including £2,000,000, and 12% of that part of the **hammer price** above £2,000,001.

2 TAXES

The successful bidder is responsible for any applicable tax including any VAT, sales or compensating use tax or equivalent tax wherever they arise on the **hammer price** and the **buyer's premium**. It is the buyer's responsibility to ascertain and pay all taxes due. You can find details of how VAT and VAT reliefs are dealt with in the section of the catalogue headed 'VAT Symbols and Explanation'. VAT charges and reliefs depend on the particular circumstances of the buyer so this section, which is not exhaustive, should be used only as a general guide. In all circumstances EU and UK law takes precedence. If you have any questions about VAT, please contact Christie's VAT Department on +44 (0)20 7839 9060 (email: VAT_London@christies.com, fax: +44 (0)20 3219 6076).

3 ARTIST'S RESALE ROYALTY

In certain countries, local laws entitle the artist or the artist's estate to a royalty known as 'artist's resale right' when any **lot** created by the artist is sold. We identify these **lots** with the symbol 'A' next to the **lot** number. If these laws apply to a **lot**, you must pay us an extra amount equal to the royalty. We will pay the royalty to the appropriate authority on the seller's behalf.

The artist's resale royalty applies if the **hammer price** of the **lot** is 1,000 euro or more. The total royalty for any **lot** cannot be more than 12,500 euro. We work out the amount owed as follows:

Royalty for the portion of the hammer price (in euros)

- 4% up to 50,000
- 3% between 50,000.01 and 200,000
- 1% between 200,000.01 and 350,000
- 0.50% between 350,000.01 and 500,000
- over 500,000, the lower of 0.25% and 12,500 euro.

We will work out the artist's resale royalty using the euro to sterling rate of exchange of the European Central Bank on the day of the auction.

E WARRANTIES

1 SELLER'S WARRANTIES

For each **lot**, the seller gives a **warranty** that the seller:

- (a) is the owner of the **lot** or a joint owner of the **lot** acting with the permission of the other co-owners or, if the seller is not the owner or a joint owner of the **lot**, has the permission of the owner to sell the **lot**, or the right to do so in law; and
- (b) has the right to transfer ownership of the **lot** to the buyer without any restrictions or claims by anyone else.

If either of the above **warranties** are incorrect, the seller shall not have to pay more than the **purchase price** (as defined in paragraph F1(a) below) paid by you to us. The seller will not be responsible to you for any reason for loss of profits or business, expected savings, loss of opportunity or interest, costs, damages, other damages or expenses. The seller gives no **warranty** in relation to any **lot** other than as set out above and, as far as the seller is allowed by law, all **warranties** from the seller to you, and all other obligations upon the seller which may be added to this agreement by law, are excluded.

2 OUR AUTHENTICITY WARRANTY

We warrant, subject to the terms below, that the **lots** in our sales are authentic (our **authenticity warranty**). If, within five years of the date of the auction, you satisfy us that your **lot** is not **authentic**, subject to the terms below, we will refund the **purchase price** paid by you. The meaning of **authentic** can be found in the glossary at the end of these Conditions of Sale. The terms of the **authenticity warranty** are as follows:

- (a) It will be honoured for a period of five years from the date of the auction. After such time, we will not be obligated to honour the **authenticity warranty**.
- (b) It is given only for information shown in UPPERCASE type in the first line of the **catalogue description** (the '**Heading**'). It does not apply to any information other than in the **Heading** even if shown in UPPERCASE type.
- (c) The **authenticity warranty** does not apply to any **Heading** or part of a **Heading** which is **qualified**. **Qualified** means limited by a clarification in a **lot's catalogue description** or by the use in a **Heading** of one of the terms in the section titled **Qualified Headings** on the page of the catalogue headed 'Important Notices and Explanation of Catalogue Pricing'. For example, use of the term 'ATTRIBUTED TO...' in a **Heading** means that the **lot** is in Christie's opinion probably a work by the named artist but no **warranty** is provided that the **lot** is the work of the named artist. Please read the full list of **Qualified Headings** and a **lot's full catalogue description** before bidding.
- (d) The **authenticity warranty** applies to the **Heading** as amended by any **Saleroom Notice**.
- (e) The **authenticity warranty** does not apply where scholarship has developed since the auction leading to a change in generally accepted opinion. Further, it does not apply if the **Heading** either

matched the generally accepted opinion of experts at the date of the sale or drew attention to any conflict of opinion.

(f) The **authenticity warranty** does not apply if the **lot** can only be shown not to be **authentic** by a scientific process which, on the date we published the catalogue, was not available or generally accepted for use, or which was unreasonably expensive or impractical, or which was likely to have damaged the **lot**.

(g) The benefit of the **authenticity warranty** is only available to the original buyer shown on the invoice for the **lot** issued at the time of the sale and only if the original buyer has owned the **lot** continuously between the date of the auction and the date of claim. It may not be transferred to anyone else.

- (i) In order to claim under the **authenticity warranty** you must:
 - (i) give us written details, including full supporting evidence, of any claim within five years of the date of the auction;
 - (ii) at Christie's option, we may require you to provide the written opinions of two recognised experts in the field of the **lot** mutually agreed by you and us in advance confirming that the **lot** is not **authentic**. If we have any doubts, we reserve the right to obtain additional opinions at our expense; and
 - (iii) return the **lot** at your expense to the saleroom from which you bought it in the **condition** it was in at the time of sale.

(j) Your only right under this **authenticity warranty** is to cancel the sale and receive a refund of the **purchase price** paid by you to us. We will not, in any circumstances, be required to pay you more than the **purchase price** nor will we be liable for any loss of profits or business, loss of opportunity or value, expected savings or interest, costs, damages, other damages or expenses.

Books. Where the **lot** is a book, we give an additional **warranty** for 14 days from the date of the sale that if on conclusion any **lot** is defective in text or illustration, we will refund your **purchase price**, subject to the following terms:

- (a) This additional **warranty** does not apply to:
 - (i) the absence of blanks, half titles, tissue guards or advertisements, damage in respect of bindings, stains, spotting, marginal tears or other defects not affecting completeness of the text or illustration;
 - (ii) drawings, autographs, letters or manuscripts, signed photographs, music, airmail tags or periodicals;
 - (iii) books not identified by title;
 - (iv) **lots** sold without a printed estimate;
 - (v) books which are described in the catalogue as sold not subject to return; or
 - (vi) defects stated in any **condition** report or announced at the time of sale.
- (b) To make a claim under this paragraph you must give written details of the defect and return the **lot** to the sale room at which you bought it in the same **condition** as at the time of sale, within 14 days of the date of the sale.
- (k) **South East Asian Modern and Contemporary Art and Chinese Calligraphy and Printing.**

In these categories, the **authenticity warranty** does not apply because current scholarship does not permit the making of definitive statements. Christie's does, however, agree to cancel a sale in either of these two categories of art where it has been proven the **lot** is a forgery. Christie's will refund to the original buyer the **purchase price** in accordance with the terms of Christie's **authenticity warranty**, provided that the original buyer notifies us with full supporting evidence documenting the forgery claim within twelve (12) months of the date of the auction. Such evidence must be satisfactory to us that the **lot** is a forgery in accordance with paragraph E2(h)(ii) above and the **lot** must be returned to us in accordance with E2(h)(ii) above. Paragraphs E2(b), (c), (d), (e), (f) and (g) and (i) also apply to a claim under these categories.

F PAYMENT

1 HOW TO PAY

- (a) Immediately following the auction, you must pay the **purchase price** being:
 - (i) the **hammer price**; and
 - (ii) the **buyer's premium**; and
 - (iii) any amounts due under section D3 above; and
 - (iv) any duties, goods, sales, use, compensating or service tax or VAT.

Payment is due no later than by the end of the seventh calendar day following the date of the auction (the '**due date**').

(b) We will only accept payment from the registered bidder. Once issued, we cannot change the buyer's name on an invoice or re-issue the invoice in a different name. You must pay immediately even if you wish to export the **lot** to another country.

(c) You must pay for **lots** bought at Christie's in the United Kingdom in the currency stated on the invoice in one of the following ways:

- (i) Wire transfer.
You must make payments to: Barclays Bank Plc, City Office, PO Box 217, 72 Lombard Street, London EC3P 3BT. Account number: 00172710, sort code: 30-00-02 Swift code: LOYDGB2LCTY. IBAN (international bank account number): GB81 LOYD 3000 0200 1727 10.
- (ii) Credit Card.

We accept most major credit cards subject to certain conditions. To make a 'cardholder not present' (CNP) payment, you must complete a CNP authorisation form which you can get from our Cashiers Department. You must send a completed CNP authorisation form by fax to +44 (0)20 7839 2869 or by post to the address set out in paragraph (d) below. If you want to make a CNP payment over the telephone, you must call +44 (0)20 7839 9060. CNP payments cannot be accepted by all salerooms and are subject to certain restrictions. Details of the conditions and restrictions applicable to credit card payments are available from our Cashiers Department, whose details are set out in paragraph (d) below.

(iii) Cash

We will accept cash subject to a maximum of £5,000 per buyer per year at our Cashier's Department only (subject to conditions).

(iv) Banker's draft

You must make these payable to Christie's and there may be conditions.

(v) Cheque

You must make cheques payable to Christie's. Cheques must be from accounts in pounds sterling from a United Kingdom bank.

(d) You must quote the sale number, your invoice number and client number when making a payment. All payments sent by post must be sent to: Christie's Cashiers Department, 8 King Street, St James's, London SW1R 1LR.

(e) For more information please contact our Cashiers Department by phone on +44 (0)20 7839 9060 or fax on +44 (0)20 7389 2869.

2. TRANSFERRING OWNERSHIP TO YOU

You will not own the **lot** and ownership of the **lot** will not pass to you until we have received full and clear payment of the **purchase price**, even in circumstances where we have released the **lot** to the buyer.

3 TRANSFERRING RISK TO YOU

The risk in and responsibility for the **lot** will transfer to you from whichever is the earlier of the following:

- (a) When you collect the **lot**; or
- (b) At the end of the 30th day following the date of the auction or, if earlier, the date the **lot** is taken into care by a third party warehouse as set out on the page headed 'Storage and Collection', unless we have agreed otherwise with you in writing.

4 WHAT HAPPENS IF YOU DO NOT PAY

(a) If you fail to pay us the **purchase price** in full by the **due date**, we will be entitled to do one or more of the following (as well as enforce our rights under paragraph F5 and any other rights or remedies we have by law):

- (i) to charge interest from the **due date** at a rate of 5% a year above the UK Lloyds Bank base rate from time to time on the unpaid amount due;
 - (ii) we can cancel the sale of the **lot**. If we do this, we may sell the **lot** again, publicly or privately on such terms we shall think necessary or appropriate, in which case you must pay us any shortfall between the **purchase price** and the proceeds from the resale. You must also pay all costs, expenses, losses, damages and legal fees we have to pay or may suffer and any shortfall in the seller's commission on the resale;
 - (iii) we can pay the seller an amount up to the net proceeds payable in respect of the amount bid by your default in which case you acknowledge and understand that Christie's will have all of the rights of the seller to pursue you for such amounts;
 - (iv) we can hold you legally responsible for the **purchase price** and may begin legal proceedings to recover it together with other losses, interest, legal fees and costs as far as we are allowed by law;
 - (v) we can take what you owe us from any amounts which we or any company in the **Christie's Group** may owe you (including any deposit or other part-payment which you have paid to us);
 - (vi) we can, at our option, reveal your identity and contact details to the seller;
 - (vii) we can reject at any future auction any bids made by or on behalf of the buyer or to obtain a deposit from the buyer before accepting any bids;
 - (viii) to exercise all the rights and remedies of a person holding security over any property in our possession owned by you, whether by way of pledge, security interest or in any other way as permitted by the law of the place where such property is located. You will be deemed to have granted such security to us and we may retain such property as collateral security for your obligations to us; and
 - (ix) we can take any other action we see necessary or appropriate.
- (b) If you owe money to us or to another **Christie's Group** company, we can use any amount you do pay, including any deposit or other part-payment you have made to us, or which we owe you, to pay off any amount you owe to us or another **Christie's Group** company for any transaction.

(c) If you make payment in full after the **due date**, and we choose to accept such payment we may charge you storage and transport costs from the date that is 30 calendar days following the auction in accordance with paragraphs G(d) and (i). In such circumstances paragraph G(d)(iv) shall apply.

5 KEEPING YOUR PROPERTY

If you owe money to us or to another **Christie's Group** company, as well as the rights set out in F4 above, we can use or deal with any of your property we hold or which is held by another **Christie's Group** company in any way we are allowed to by law. We will only release your property to you after you pay us or the relevant **Christie's Group** company in full for what you owe. However, if we choose, we can also sell your property in any way we think appropriate. We will use the proceeds of the sale against any amounts you owe us and we will pay any amount left from that sale to you. If there is a shortfall, you must pay us any amount in excess of the amount we have received from the sale and the amount you owe us.

G COLLECTION AND STORAGE

(a) We ask that you collect purchased **lots** promptly following the auction (but note that you may not collect any **lots** until you have made full and clear payment of all amounts due to us).

(b) Information on collecting **lots** is set out on the storage and collection page and on an information sheet which you can get from the bidder registration staff or Christie's cashiers on +44 (0)20 7839 9060.

(c) If you do not collect any **lot** promptly following the auction we can, at our option, remove the **lot** to another Christie's location or an affiliate or third party warehouse.

(d) If you do not collect a **lot** by the end of the 30th day following the date of the auction, unless otherwise agreed in writing:

- (i) we will charge you storage costs from that date.
- (ii) we can at our option move the **lot** to or within an affiliate or third party warehouse and charge you transport costs and administration fees for doing so.
- (iii) we may sell the **lot** in any commercially reasonable way we think appropriate.

(iv) the storage terms which can be found at christies.com/storage shall apply.
(v) Nothing in this paragraph is intended to limit our rights under paragraph F4.

H TRANSPORT AND SHIPPING

1 TRANSPORT AND SHIPPING

We will enclose a transport and shipping form with each invoice sent to you. You must make all transport and shipping arrangements. However, we can arrange to pack, transport and ship your property if you ask us to and pay the costs of doing so. We recommend that you ask us for an **estimate**, especially for any large items or items of high value that need professional packing before you bid. We may also suggest other hauliers, packers, transporters or experts if you ask us to do so. For more information, please contact Christie's Art Transport on +44 (0)20 7839 9060. See the information set out at www.christies.com/shipping or contact us at arttransport.london@christies.com. We will take reasonable care when we are handling, packing, transporting and shipping a lot. However, if we recommend another company for any of these purposes, we are not responsible for their acts, failure to act or neglect.

2 EXPORT AND IMPORT

A lot sold at auction may be affected by laws on exports from the country in which it is sold and the import restrictions of other countries. Many countries require a declaration of export for property leaving the country and/or an import declaration on arrival of property into the country. Local laws may prevent you from importing a lot or may prevent you selling a lot in the country you import it into.

(a) You alone are responsible for getting advice about and meeting the requirements of any laws or regulations which apply to exporting or importing a lot prior to bidding if you are relying on a licence or there is a delay in getting one, you must still pay us in full for the lot. We may be able to help you apply for the appropriate licences if you ask us to and pay our fee for doing so. However, we cannot guarantee that you will get one. For more information, please contact Christie's Art Transport Department on +44 (0)20 7839 9060. See the information set out at www.christies.com/shipping or contact us at arttransport.london@christies.com.

(b) Lots made of protected species

Lots made of or including (regardless of the percentage) endangered and other protected species of wildlife are marked with the symbol – in the catalogue. This material includes, among other things, ivory, tortoiseshell, crocodile skin, rhinoceros horn, whalebone, certain species of coral, and Brazilian rosewood. You should check the relevant customs laws and regulations before bidding on any lot containing this material if you plan to import the lot into another country. Several countries refuse to allow you to import property containing these materials, and some other countries require a licence from the relevant regulatory agencies in the countries of exportation as well as importation. In some cases, the lot can only be shipped with an independent scientific confirmation of species and/or age and you will need to obtain these at your own cost. If a lot contains elephant ivory, or any other wildlife material that could be confused with elephant ivory (for example, mammoth ivory, walrus ivory, helmeted hornbill ivory), please see further important information in paragraph (c) if you are proposing to import the lot into the USA. We will not be obliged to cancel your purchase and refund the purchase price if your lot may not be exported, imported or it is seized for any reason by a government authority. It is your responsibility to determine and satisfy the requirements of any applicable laws or regulations relating to the export or import of property containing such protected or regulated species.

(c) US import ban on African elephant ivory

The USA prohibits the import of ivory from the African elephant. Any lot containing elephant ivory or other wildlife material that could be easily confused with elephant ivory (for example, mammoth ivory, walrus ivory, helmeted hornbill ivory) can only be imported into the US with results of a rigorous scientific test acceptable to Fish & Wildlife, which confirms that the material is not African elephant ivory. Where we have conducted such rigorous scientific testing on a lot prior to sale, we will make this clear in the lot description. In all other cases, we cannot confirm whether a lot contains African elephant ivory, and you will buy that lot at your own risk and be responsible for any scientific test or other reports required for import into the USA at your own cost. If such scientific tests are inconclusive, you will be responsible for any test on African elephant, we will not be obliged to cancel your purchase and refund the purchase price.

(d) **Lots containing material that originates from Burma (Myanmar)** Lots which contain rubies or jadeite originating in Burma (Myanmar) may not generally be imported into the United States. As a convenience to US buyers, lots which contain rubies or jadeite of Burmese or indeterminate origin have been marked with the symbol ▽ in the catalogue. In relation to items that contain any other types of gemstones originating in Burma (e.g. sapphires) such items may be imported into the United States provided that the gemstones have been mounted or incorporated into jewellery outside of Burma and provided that the setting is not of a temporary nature (e.g. a string).

(e) Lots of Iranian origin

Some countries prohibit or restrict the purchase and/or import of Iranian-origin works of conventional craftsmanship (works that are not by a recognised artist and/or that have a function, for example: bowls, ewers, tiles, ornamental boxes). For example, the USA prohibits the import of this type of property and its purchase by US persons (whereas local laws in other countries, such as Canada, only permit the import of this property in certain circumstances). As a convenience to buyers, Christie's indicates under the title of a lot if the lot originates from Iran (Persia). It is your responsibility to ensure you do not bid on or import a lot in contravention of the sanctions or trade embargoes that apply to you.

(f) Gold

Gold of less than 18ct does not qualify in all countries as 'gold' and

may be refused import into those countries as 'gold'.

(g) Jewellery over 50 years old

Under current laws, jewellery over 50 years old which is worth £34,000 or more will require an export licence which we can apply for on your behalf. It may take up to eight weeks to obtain this export jewellery licence.

(h) Watches

(i) Many of the watches offered for sale in this catalogue are pictured with straps made of endangered or protected animal materials such as alligator or crocodile. These lots are marked with the symbol – in the catalogue. These endangered species straps are shown for display purposes only and are not for sale. Christie's will remove and return the strap prior to shipment from the sale site. At some court proceedings, Christie's has, at its discretion, made the displayed endangered species strap available to the buyer of the lot free of charge collected in person from the sale site within one year of the date of the sale. Please check with the department for details on a particular lot.

For all symbols and other markings referred to in paragraph H2, please note that lots are marked as a convenience to you, but we do not accept liability for errors or for failing to mark lots.

I OUR LIABILITY TO YOU

(a) We give no warranty in relation to any statement made, or information given, by us or our representatives or employees, about any lot other than as set out in the **authenticity warranty** and, as far as we are allowed by law, all **warranties** and other terms which may be added to this agreement by law are excluded. The seller's **warranties** contained in paragraph E1 are their own and we do not have any liability to you in relation to those **warranties**.

(b) We are not responsible to you for any reason (whether for breaking this agreement or any other matter relating to your purchase of, or bid for, any lot) other than in the event of fraud or fraudulent misrepresentation by us or other than as expressly set out in these Conditions of Sale; or

(c) We give any representation, **warranty** or guarantee or assume any liability of any kind in respect of any lot with regard to its merchantability, fitness for a particular purpose, description, size, quality, condition, attribution, authenticity, rarity, importance, medium, provenance, exhibition history, literature, or historical relevance. Except as required by local law, any **warranty** of any kind is excluded by this paragraph.

(d) In particular, please be aware that our written and telephone bidding services, Christie's LIVE™, **condition** reports, currency converter and saleroom video screens are free services and we are not responsible to you for any error (human or otherwise), omission or breakdown in these services.

(e) We have no responsibility to any person other than a buyer in connection with the purchase of any lot.

(f) If, in spite of the terms in paragraphs (a) to (d) or E2(i) above, we are found to be liable to you for any reason, we shall not be obliged to pay more than the purchase price paid by you to us. We will not be responsible to you for any reason for loss of profits or business, loss of opportunity or value, expected savings or interest, costs, damages, or expenses.

J OTHER TERMS

1 OUR ABILITY TO CANCEL

In addition to the other rights of cancellation contained in this agreement, we can cancel a sale of a lot if we reasonably believe that completing the transaction is, or may be, unlawful or that the sale will place us or the seller under any liability to anyone else or may damage our reputation.

2 RECORDINGS

We may videotape and record proceedings at any auction. We will keep any personal information confidential, except to the extent disclosure is required by law. However, we may, through this process, use or share these recordings with another Christie's Group company and marketing partners to analyse our customers and to help us to tailor our services for buyers. If you do not want to be videotaped, you may make arrangements to make a telephone or written bid or bid on Christie's LIVE™ instead. Unless we agree otherwise in writing, you may not videotape or record proceedings at any auction.

3 COPYRIGHT

We own the copyright in all images, illustrations and written material produced by or for us relating to a lot, including the contents of our catalogues unless otherwise noted in the catalogue. You cannot use them without our prior written permission. We do not offer any guarantee that you will gain any copyright or other reproduction rights to the lot.

4 ENFORCING THIS AGREEMENT

If a court finds that any part of this agreement is not valid or is illegal or impossible to enforce, that part of the agreement will be affected as being deleted and the rest of this agreement will not be affected.

5 TRANSFERRING YOUR RIGHTS AND RESPONSIBILITIES

You may not grant a security over or transfer your rights or responsibilities under these terms on the contract of sale with the buyer unless we have given our written permission. This agreement will be binding on your successors or estate and anyone who takes over your rights and responsibilities.

6 TRANSLATIONS

If we have provided a translation of this agreement, we will use this original version in deciding any issues or disputes which arise under this agreement.

7 PERSONAL INFORMATION

We will hold and process your personal information and may pass it to another Christie's Group company for use as described in, and in line with, our privacy policy at www.christies.com.

8 WAIVER

No failure or delay to exercise any right or remedy provided under the Conditions of Sale shall constitute a waiver of that or any other right or remedy, nor shall it prevent or restrict the further exercise of that or any other right or remedy. No single or partial exercise of such right or remedy shall prevent or restrict the further exercise of that or any other right or remedy.

9 LAW AND DISPUTES

This agreement, and any non-contractual obligations arising out of or in connection with this agreement, or any other rights you may have relating to the purchase of a lot will be governed by the laws of England and Wales. Before we or you start any court proceedings (including in the limited circumstances where the dispute, controversy or claim is related to proceedings brought by someone else and this dispute could be joined to those proceedings), we agree we will each try to settle the dispute by mediation following the Centre for Effective Dispute Resolution (CEDR) Model mediation Procedure. We will use a mediator affiliated with CEDR who you and you agree to. If the dispute is not settled by mediation, you agree for our benefit that the dispute will be referred to and dealt with exclusively in the courts of England and Wales. However, we will have the right to bring proceedings against you in any other court.

10 REPORTING ON WWW.CHRISTIES.COM

Details of all lots sold by us, including **catalogue descriptions** and prices, may be reported on www.christies.com. Sales totals are **hammer price plus buyer's premium** and do not reflect costs, financing fees, or application of buyer's or seller's credits. We regret that we cannot agree to requests to remove these details from www.christies.com.

K GLOSSARY

authentic: a genuine example, rather than a copy or forger of;

(i) the work of a particular artist, author or manufacturer, if the lot is described in the **Heading** as the work of that artist, author or manufacturer;

(ii) a work created within a particular period or culture, if the lot is described in the **Heading** as a work created during that period or culture;

(iii) a marking for a particular origin source if the lot is described in the **Heading** as being of that origin or source; or
(iv) in the case of gems, a work which is made of a particular material, if the lot is described in the **Heading** as being made of that material.

authenticity warranty: the guarantee we give in this agreement that a lot is **authentic** as set out in section E2 of this agreement.

buyer's premium: the charge the buyer pays us along with the **hammer price**.

catalogue description: the description of a lot in the catalogue for the auction, as amended by any saleroom notice.

Christie's Group: Christie's International Plc, its subsidiaries and other companies within its corporate group.

condition: the physical condition of a lot.

date due: has the meaning given to it in paragraph F1(a).

estimate: the price range included in the catalogue or any saleroom notice within which we believe a lot may sell. **Low estimate** means the lower figure in the range and **high estimate** means the higher figure. The **mid estimate** is the midpoint between the two.

hammer price: the amount of the highest bid the auctioneer accepts for the sale of a lot.

Heading: has the meaning given to it in paragraph E2.

lot: an item to be offered at auction (or two or more items to be offered at auction as a group).

other damages: any special, consequential, incidental or indirect damages of any kind or any damages which fall within the meaning of 'special', 'incidental' or 'consequential' under local law.

purchase price: has the meaning given to it in paragraph F1(a).

provenance: the ownership history of a lot.

qualified: has the meaning given to it in paragraph E2 and **Qualified Headings** means the section headed **Qualified Headings** on the page of the catalogue headed 'Important Notices and Explanation of Cataloguing Practices'.

reserve: the confidential amount below which we will not sell a lot.

saleroom notice: a written notice posted next to the lot in the saleroom and on www.christies.com, which is also read to prospective telephone bidders and notified to clients who have left commission bids, or an announcement made by the auctioneer either at the beginning of the sale, or before a particular lot is auctioned.

UPPER CASE type: means having all capital letters.

warranty: a statement or representation in which the person making it guarantees that the facts set out in it are correct.

VAT SYMBOLS AND EXPLANATION

You can find a glossary explaining the meanings of words coloured in bold on this page at the end of the section of the catalogue headed 'Conditions of Sale'

VAT payable

Symbol	
No Symbol	We will use the VAT Margin Scheme. No VAT will be charged on the hammer price . VAT at 20% will be added to the buyer's premium but will not be shown separately on our invoice.
†	We will invoice under standard VAT rules and VAT will be charged at 20% on both the hammer price and buyer's premium and shown separately on our invoice.
θ	For qualifying books only, no VAT is payable on the hammer price or the buyer's premium .
*	These lots have been imported from outside the EU for sale and placed under the Temporary Admission regime. Import VAT is payable at 5% on the hammer price . VAT at 20% will be added to the buyer's premium but will not be shown separately on our invoice.
Ω	These lots have been imported from outside the EU for sale and placed under the Temporary Admission regime. Customs Duty as applicable will be added to the hammer price and Import VAT at 20% will be charged on the Duty Inclusive hammer price . VAT at 20% will be added to the buyer's premium but will not be shown separately on our invoice.
α	The VAT treatment will depend on whether you have registered to bid with an EU or non-EU address: <ul style="list-style-type: none"> • If you register to bid with an address within the EU you will be invoiced under the VAT Margin Scheme (see No Symbol above). • If you register to bid with an address outside of the EU you will be invoiced under standard VAT rules (see † symbol above)
‡	For wine offered 'in bond' only. If you choose to buy the wine in bond no Excise Duty or Clearance VAT will be charged on the hammer . If you choose to buy the wine out of bond Excise Duty as applicable will be added to the hammer price and Clearance VAT at 20% will be charged on the Duty inclusive hammer price . Whether you buy the wine in bond or out of bond, 20% VAT will be added to the buyer's premium and shown on the invoice.

VAT refunds: what can I reclaim?

If you are:

A non VAT registered UK or EU buyer		No VAT refund is possible
UK VAT registered buyer	No symbol and α	The VAT amount in the buyer's premium cannot be refunded. However, on request we can re-invoice you outside of the VAT Margin Scheme under normal UK VAT rules (as if the lot had been sold with a † symbol). Subject to HMRC's rules, you can then reclaim the VAT charged through your own VAT return.
	* and Ω	Subject to HMRC's rules, you can reclaim the Import VAT charged on the hammer price through your own VAT return when you are in receipt of a C79 form issued by HMRC. The VAT amount in the buyer's premium is invoiced under Margin Scheme rules so cannot normally be claimed back. However, if you request to be re-invoiced outside of the Margin Scheme under standard VAT rules (as if the lot had been sold with a † symbol) then, subject to HMRC's rules, you can reclaim the VAT charged through your own VAT return.
EU VAT registered buyer	No Symbol and α	The VAT amount in the buyer's premium cannot be refunded. However, on request we can re-invoice you outside of the VAT Margin Scheme under normal UK VAT rules (as if the lot had been sold with a † symbol). See below for the rules that would then apply.
	†	If you provide us with your EU VAT number we will not charge VAT on the buyer's premium . We will also refund the VAT on the hammer price if you ship the lot from the UK and provide us with proof of shipping, within three months of collection.
	* and Ω	The VAT amount on the hammer and in the buyer's premium cannot be refunded. However, on request we can re-invoice you outside of the VAT Margin Scheme under normal UK VAT rules (as if the lot had been sold with a † symbol). See above for the rules that would then apply.
Non EU buyer		If you meet ALL of the conditions in notes 1 to 3 below we will refund the following tax charges:
	No Symbol	We will refund the VAT amount in the buyer's premium .
	† and α	We will refund the VAT charged on the hammer price. VAT on the buyer's premium can only be refunded if you are an overseas business. The VAT amount in the buyer's premium cannot be refunded to non-trade clients.
	‡ (wine only)	No Excise Duty or Clearance VAT will be charged on the hammer price providing you export the wine while 'in bond' directly outside the EU using an Excise authorised shipper. VAT on the buyer's premium can only be refunded if you are an overseas business. The VAT amount in the buyer's premium cannot be refunded to non-trade clients.
	* and Ω	We will refund the Import VAT charged on the hammer price and the VAT amount in the buyer's premium .

1. We **CANNOT** offer refunds of VAT amounts or Import VAT to buyers who do not meet all applicable conditions in full. If you are unsure whether you will be entitled to a refund, please contact Client Services at the address below **before you bid**.
 2. No VAT amounts or Import VAT will be refunded where the total refund is under £100.
 3. In order to receive

a refund of VAT amounts/Import VAT (as applicable) non-EU buyers must:
 (a) have registered to bid with an address outside of the EU; **and**
 (b) provide immediate proof of correct export out of the EU within the required time frames of: 30 days via a controlled export for * and Ω **lots**. All other **lots** must be exported within three months of collection.

4. Details of the documents which you must provide to us to show satisfactory proof of export/shipping are available from our VAT team at the address below. We charge a processing fee of £35.00 per invoice to check shipping/export documents. We will waive this processing fee if you appoint Christie's Shipping Department to arrange your export/shipping.

5. If you appoint Christie's Art Transport or one of our authorised shippers to arrange your export/shipping we will issue you with an export invoice with the applicable VAT or duties cancelled as outlined above. If you later cancel or change the shipment in a manner that infringes the rules outlined above we will issue a revised invoice charging you all applicable taxes/charges.

6. If you ask us to re-invoice you under normal UK VAT rules (as if the **lot** had been sold with a † symbol) instead of under the Margin Scheme the **lot** may become ineligible to be resold using the Margin Schemes. You should take professional advice if you are unsure how this may affect you.

7. All re-invoicing requests must be received within four years from the date of sale. If you have any questions about VAT refunds please contact Christie's Client Services on info@christies.com
 Tel: +44 (0)20 7389 2886.
 Fax: +44 (0)20 7839 1611.

SYMBOLS USED IN THIS CATALOGUE

The meaning of words coloured in **bold** in this section can be found at the end of the section of the catalogue headed 'Conditions of Sale'.

○

Christie's has a direct financial interest in the lot. See Important Notices and Explanation of Cataloguing Practice.

△

Owned by Christie's or another **Christie's Group** company in whole or in part. See Important Notices and Explanation of Cataloguing Practice.

◆

Christie's has a direct financial interest in the **lot** and has funded all or part of our interest with the help of someone else. See Important Notices and Explanation of Cataloguing Practice.

λ

Artist's Resale Right. See Section D3 of the Conditions of Sale.

•

Lot offered without **reserve** which will be sold to the highest bidder regardless of the pre-sale estimate in the catalogue.

~

Lot incorporates material from endangered species which could result in export restrictions. See Section H2(b) of the Conditions of Sale.

Ψ

Lot containing jadeite and rubies from Burma or of indeterminate origin. See Section H2(d) of the Conditions of Sale.

? *, Ω, α, #, †

See VAT Symbols and Explanation.

■

See Storage and Collection Pages.

Please note that **lots** are marked as a convenience to you and we shall not be liable for any errors in, or failure to, mark a **lot**.

IMPORTANT NOTICES AND EXPLANATION OF CATALOGUING PRACTICE

CHRISTIE'S INTEREST IN PROPERTY CONSIGNED FOR AUCTION

△ Property Owned in part or in full by Christie's

From time to time, Christie's may offer a **lot** which it owns in whole or in part. Such property is identified in the catalogue with the symbol △ next to its **lot** number.

○ Minimum Price Guarantees

On occasion, Christie's has a direct financial interest in the outcome of the sale of certain lots consigned for sale. This will usually be where it has guaranteed to the Seller that whatever the outcome of the auction, the Seller will receive a minimum sale price for the work. This is known as a minimum price guarantee. Where Christie's holds such financial interest we identify such **lots** with the symbol ○ next to the **lot** number.

◆ Third Party Guarantees/ Irrevocable bids

Where Christie's has provided a Minimum Price Guarantee it is at risk of making a loss, which can be significant, if the **lot** fails to sell. Christie's therefore sometimes chooses to share that risk with a third party. In such cases the third party agrees prior to the auction to place an irrevocable written bid on the **lot**. The third party is therefore committed to bidding on the **lot** and, even if there are no other bids, buying the **lot** at the level of the written bid unless there are any higher bids. In doing so, the third party takes on all or part of the risk of the **lot** not being sold. If the **lot** is not sold, the third party may incur a loss. **Lots** which are subject to a third party guarantee arrangement are identified in the catalogue with the symbol ◆.

The third party will be remunerated in exchange for accepting this risk based on a fixed fee if the third party is the successful bidder or on the final hammer price in the event that the third party is not the successful bidder. The third party may also bid for the **lot** above the written bid. Where it does so, and is the successful bidder, the fixed fee for taking on the guarantee risk may be netted against the final **purchase price**.

Third party guarantors are required by us to disclose to anyone they are advising their financial interest in any **lots** they are guaranteeing. However, for the avoidance of any doubt, if you are advised by or bidding through an agent on a **lot** identified as being subject to a third party guarantee you should always ask your agent to confirm whether or not he or she has a financial interest in relation to the **lot**.

Other Arrangements

Christie's may enter into other arrangements not involving bids. These include arrangements where Christie's has given the Seller an Advance on the proceeds of sale of the **lot** or where Christie's has shared the risk of a guarantee with a partner without the partner being required to place an irrevocable written bid or otherwise participating in the bidding on the **lot**. Because such arrangements are unrelated to the bidding process they are not marked with a symbol in the catalogue.

Bidding by parties with an interest

In any case where a party has a financial interest in a **lot** and intends to bid on it we will make a saleroom announcement to ensure that all bidders are aware of this. Such financial interests can include where beneficiaries of an Estate have reserved the right to bid on a **lot** consigned by the Estate or where a partner in a risk-sharing arrangement has reserved the right to bid on a **lot** and/or notified us of their intention to bid.

Please see <http://www.christies.com/financial-interest/> for a more detailed explanation of minimum price guarantees and third party financing arrangements.

Where Christie's has an ownership or financial interest in every **lot** in the catalogue, Christie's will not designate each **lot** with a symbol, but will state its interest in the front of the catalogue.

POST 1950 FURNITURE

All items of post-1950 furniture included in this sale are items either not originally supplied for use in a private home or now offered solely as works of art. These items may not comply with the provisions of the Furniture and Furnishings (Fire) (Safety) Regulations 1988 (as amended in 1989 and 1993, the "Regulations"). Accordingly, these items should not be used as furniture in your home in their current condition. If you do intend to use such items for this purpose, you must first ensure that they are reupholstered, restuffed and/or recovered (as appropriate) in order that they comply with the provisions of the Regulations.

EXPLANATION OF CATALOGUING PRACTICE

Terms referred to in paragraph 2 are as follows:-

A work catalogued with the name(s) or recognised designation of an artist, without any qualification, is, in our opinion, a work by the artist.

In other cases, the following expressions, with the following meanings are used:

"Attributed to ..."

in our opinion probably a work by the artist in whole or in part.

"Studio of ..."

"Workshop of ..."

in our opinion a work executed in the studio or workshop of the artist, possibly under his supervision.

"Circle of ..."

in our opinion a work of the period of the artist and showing his influence.

"Follower of ..."

in our opinion a work executed in the artist's style but not necessarily by a pupil.

"Manner of ..."

in our opinion a work executed in the artist's style but of a later date.

"After ..."

in our opinion a copy (of any date) of a work of the artist.

"Signed ..."

"Dated ..."

"Inscribed ..."

in our opinion the work has been signed/dated/inscribed by the artist. The addition of a question mark indicates an element of doubt.

"With signature ..."

"With date ..."

"With inscription ..."

in our opinion the signature/date/inscription/ stamp is by a hand other than that of the artist.

REFERENCE NUMBERS

Where applicable, the numbers which accompany the title of each lot refer to the catalogue raisonné compiled by Felix Marcilhac 'R. Lalioue. oeuvre de Verre' (Paris 1994).

STORAGE AND COLLECTION

COLLECTION LOCATION AND TERMS

Specified **lots** (sold and unsold) marked with a filled square (■) not collected from Christie's by 5.00 pm on the day of the sale will, at our option, be removed to Cadogan Tate Ltd. Christie's will inform you if the **lot** has been sent offsite. Our removal and storage of the **lot** is subject to the terms and conditions of storage which can be found at Christies.com/storage and our fees for storage are set out in the table below - these will apply whether the **lot** remains with Christie's or is removed elsewhere.

If the **lot** is transferred to Cadogan Tate Ltd, it will be available for collection from 12 noon on the second business day following the sale.

Please call Christie's Client Service 24 hours in advance to book a collection time at Cadogan Tate Ltd. All collections from Cadogan Tate Ltd. will be by pre-booked appointment only.

Tel: +44 (0)20 7839 9060

Email: csollectionsuk@christies.com.

If the **lot** remains at Christie's it will be available for collection on any working day 9.00am to 5.00pm. **Lots** are not available for collection at weekends.

PAYMENT OF ANY CHARGES DUE

ALL lots whether sold or unsold may be subject to storage and administration fees. Please see the details in the table below. Storage Charges may be paid in advance or at the time of collection. **Lots** may only be released on production of the 'Collection Form' from Christie's. **Lots** will not be released until all outstanding charges are settled.

SHIPPING AND DELIVERY

Christie's Post-Sale Service can organise local deliveries or international freight. Please contact them on +44 (0)20 7752 3200 or PostSaleUK@christies.com. To ensure that arrangements for the transport of your lot can be finalised before the expiry of any free storage period, please contact Christie's Post-Sale Service for a quote as soon as possible after the sale.

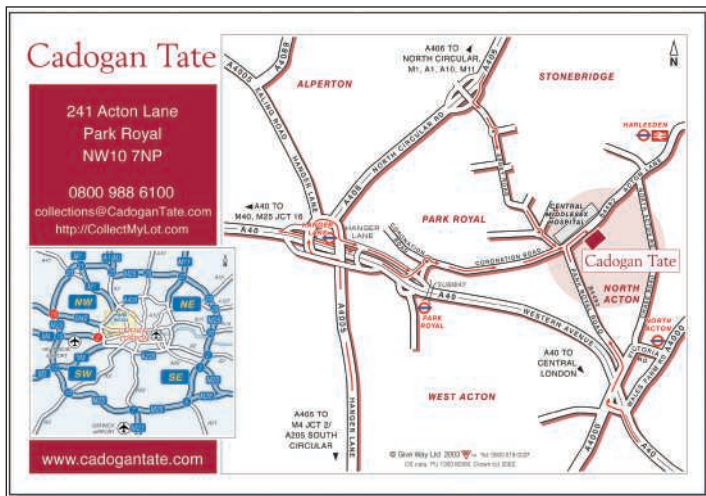
PHYSICAL LOSS & DAMAGE LIABILITY

Christie's will accept liability for physical loss and damage to sold **lots** whilst in storage. Christie's liability will be limited to the invoice purchase price including buyers' premium. Christie's liability will continue until the **lots** are collected by you or an agent acting for you following payment in full. Christie's liability is subject to Christie's Terms and Conditions of Liability posted on www.christies.com.

ADMINISTRATION FEE, STORAGE & RELATED CHARGES

CHARGES PER LOT	LARGE OBJECTS E.g. Furniture, Large Paintings & Sculpture	SMALL OBJECTS E.g. Books, Luxury, Ceramics, Small Paintings
1-30 days after the auction	Free of Charge	Free of Charge
31st day onwards: Administration Fee	£70.00	£35.00
Storage per day	£8.00	£4.00
Loss & Damage Liability	Will be charged on purchased lots at 0.5% of the hammer price or capped at the total storage charge, whichever is the lower amount.	

All charges are subject to VAT.
Please note that there will be no charge to clients who collect their lots within 30 days of this sale.
Size to be determined at Christie's discretion.



COLLECTION FROM CADOGAN TATE LTD

Please note that Cadogan Tate Ltd's opening hours are Monday to Friday 9.00 am to 5.00 pm and lots transferred to their warehouse are not available for collection at weekends.

Cadogan Tate Ltd's Warehouse
241 Acton Lane,
Park Royal,
London NW10 7NP



ANDRE ARBUS 1903-1969
SIDEBOARD, CIRCA 1940
50,000 - 70,000 €

DESIGN, VENTE DU SOIR

Paris, 22 November 2016

VIEWING

18 - 19 - 20, 22 November 2016
9, Avenue Matignon
75008 Paris

CONTACT

Pauline De Smedt
pdesmedt@christies.com
+33 (0)1 40 76 83 54



CHRISTIE'S

LALIQUE



ANÉMONE

LA COLLECTION

lalique.com



DESIGN

New York, 12 December 2016

VIEWING

9–12 December 2016
20 Rockefeller Plaza
New York, NY 10020

CONTACT

Carina Villinger
cvillinger@christies.com
+1 212 636 2236

CELINE LEPAGE (1882-1927)
'La Cueillette Des Oranges',
A pedestal, Designed 1922
executed by Sèvres, cast stoneware
45½ in. (115.5 cm.) high
signed and dated Celine Lepage 1922
\$20,000-30,000



CHRISTIE'S

LALIQUE

WEDNESDAY 16 NOVEMBER 2016
AT 2.00 PM

85 Old Brompton Road, London SW7 3LD

CODE NAME: ORANGES
SALE NUMBER: 12286

(Dealers billing name and address must agree with tax exemption certificate. Once issued, we cannot change the buyer's name on an invoice or re-issue the invoice in a different name.)

BID ONLINE FOR THIS SALE AT CHRISTIES.COM

BIDDING INCREMENTS

Bidding generally starts below the **low estimate** and increases in steps (bid increments) of up to 10 per cent. The auctioneer will decide where the bidding should start and the bid increments. Written bids that do not conform to the increments set below may be lowered to the next bidding interval.

UK£50 to UK £1000	by UK£50s
UK£1,000 to UK£2,000	by UK£100s
UK£2,000 to UK£3,000	by UK£200s
UK£3,000 to UK£5,000	by UK£200, 500, 800 (eg UK£4,200, 4,500, 4,800)
UK£5,000 to UK£10,000	by UK£500s
UK£10,000 to UK£20,000	by UK£1,000s
UK£20,000 to UK£30,000	by UK£2,000s
UK£30,000 to UK£50,000	by UK£2,000, 5,000, 8,000 (eg UK£32,200, 35,000, 38,000)
UK£50,000 to UK£100,000	by UK£5,000s
UK£100,000 to UK£120,000	by UK£10,000s
Above UK£200,000	at auctioneer's discretion

The auctioneer may vary the increments during the course of the auction at his or her own discretion.

- I request Christie's to bid on the stated **lots** up to the maximum bid I have indicated for each **lot**.
- I understand that if my bid is successful, the amount payable will be the sum of the **hammer price** and the **buyer's premium** (together with any taxes chargeable on the **hammer price** and **buyer's premium** and any applicable Artist's Resale Royalty in accordance with the Conditions of Sale - Buyer's Agreement). The **buyer's premium** rate shall be an amount equal to 25% of the **hammer price** of each **lot** up to and including £100,000, 20% on any amount over £100,001 up to and including £2,000,000 and 12% of the amount above £2,000,001. For wine and cigars there is a flat rate of 17.5% of the **hammer price** of each **lot** sold.
- I agree to be bound by the Conditions of Sale printed in the catalogue.
- I understand that if Christie's receive written bids on a **lot** for identical amounts and at the auction these are the highest bids on the **lot**, Christie's will sell the **lot** to the bidder whose written bid it received and accepted first.
- Written bids submitted on 'no reserve' **lots** will, in the absence of a higher bid, be executed at approximately 50% of the **low estimate** or at the amount of the bid if it is less than 50% of the **low estimate**. I understand that Christie's written bid service is a free service provided for clients and that, while Christie's will be as careful as it reasonably can be, Christie's will not be liable for any problems with this service or loss or damage arising from circumstances beyond Christie's reasonable control.

Auction Results: +44 (0)20 7839 9060

WRITTEN BIDS FORM CHRISTIE'S LONDON

WRITTEN BIDS MUST BE RECEIVED AT LEAST 24 HOURS BEFORE THE AUCTION BEGINS.

CHRISTIE'S WILL CONFIRM ALL BIDS RECEIVED BY FAX BY RETURN FAX. IF YOU HAVE NOT RECEIVED CONFIRMATION WITHIN ONE BUSINESS DAY, PLEASE CONTACT THE BID DEPARTMENT: TEL: +44 (0)20 7752 3225 • FAX: +44 (0)20 7581 1403 • ON-LINE WWW.CHRISTIES.COM

12286

Client Number (if applicable) _____ Sale Number _____

Billing Name (please print) _____

Address _____

Postcode _____

Daytime Telephone _____ Evening Telephone _____

Fax (Important) _____ E-mail _____

Please tick if you prefer not to receive information about our upcoming sales by e-mail

I have read and understood this written bid form and the Conditions of Sale - Buyer's Agreement

Signature _____

If you have not previously bid or consigned with Christie's, please attach copies of the following documents. Individuals: government-issued photo identification (such as a driving licence, national identity card, or passport) and, if not shown on the ID document, proof of current address, for example a utility bill or bank statement. Corporate clients: a certificate of incorporation. Other business structures such as trusts, offshore companies or partnerships; please contact the Compliance Department at +44 (0)20 7839 9060 for advice on the information you should supply. If you are registering to bid on behalf of someone who has not previously bid or consigned with Christie's, please attach identification documents for yourself as well as the party on whose behalf you are bidding, together with a signed letter of authorisation from that party. New clients, clients who have not made a purchase from any Christie's office within the last two years, and those wishing to spend more than on previous occasions will be asked to supply a bank reference. We also request that you complete the section below with your bank details:

Name of Bank(s) _____

Address of Bank(s) _____

Account Number(s) _____

Name of Account Officer(s) _____

Bank Telephone Number _____

PLEASE PRINT CLEARLY

Lot number (in numerical order)	Maximum Bid £ (excluding buyer's premium)	Lot number (in numerical order)	Maximum Bid £ (excluding buyer's premium)

If you are registered within the European Community for VAT/IVA,TV/A/BTW/MWST/MOMS Please quote number below: _____

INDEX

A

Aigle, 98
Antilopes, 5
Archers, 39, 49, 118, 126
Au Coeur des Calices, 81

B

Bacchantes, 53, 119
Baies, 4
Bandes des Roses, 68
Barr, 102
Beliers, 120
Biskra, 9
Bresse, 42

C

Cactus, 105
Calendal, 82
Calypso, 77
Cernay, 12
Ceylan, 21, 124
Chamois, 44
Charmes, 64
Cigognes, 34
Cinq Hirondelle, 2
Coquilles, 70

D

Dahlia et Papillon, 39
Dentelé, 43
Deux Amours, 40
Deux Danseuses, 103
Deux Pigeons, 37
Domremy, 122

E

Eglantines, 59, 60, 63, 65
Escargot, 10, 11, 13
Escargots, 78

F

Faucon, 30
Feuilles de Charmes, 25, 26
Formose, 32, 33
Fougères, 114
Frise Aigles, 35

G

Gobelet Six Figurines, 7
Grand Nue Socle Lierre, 51
Groupe De Six Moineaux, 36

I

Ile de France, 108
Inseparables, 19

L

Laiterons, 47
Languedoc, 111, 117
Le Jade, 83
Lièvres, 121

M

Madagascar, 24
Madrid, 67
Marly, 61
Martigues, 23
Martin-Pêcheurs, 18
Milan, 15
Moineaux, 16, 38
Monnaie Du Pape, 8, 116
Montmorency, 72
Muguet, 62, 73, 74, 75
Mures, 71

N

Nivernais, 57
Noisetier, 115
Normandie, 112

O

Oiseau De Feu, 54
Oran, 69
Oranges, 6
Oxford, 109

P

Palmes, 113
Pan, 104
Parfum N, 1
Perche, 31
Perruches, 20, 125, 127, 128, 129
Petite Libellule, 29
Pierrefonds, 58
Pissenlit, 100
Plumes, 123
Poissons, 27, 28
Prends-Moi Pres de Toi, 84

Q

Quatre Moineaux Du Japon, 17

R

Roscoff, 22
Roses, 80

S

Sauge, 14, 45
Serpent, 48, 50
Serpents, 46
Six Hirondelles Perchées, 41
Sophora, 110
Source De La Fontaine Telphuse, 52
Souris, 97, 99
Soustons, 3
Stockholm, 55
Suzanne, 79
Syracuse, 106

T

Terpsichore, 56
Treviso, 107

V

Varèse, 39
Violee Mains Jointes, 76

CHRISTIE'S

CHRISTIE'S INTERNATIONAL PLC

Patricia Barbizet, Chairwoman and CEO
Jussi Pylkkänen, Global President
Stephen Brooks, Deputy CEO
Loïc Brivezac, Gilles Erulin, Gilles Pagniez,
Héloïse Temple-Boyer,
Sophie Carter, Company Secretary

CHRISTIE'S EXECUTIVE

Patricia Barbizet, Chairwoman and CEO
Jussi Pylkkänen, Global President
Stephen Brooks, Deputy CEO

INTERNATIONAL CHAIRMEN

François Curiel, Chairman, Asia Pacific
Stephen Lash, Chairman Emeritus, Americas
Viscount Linley, Honorary Chairman, EMERI
Charles Cator, Deputy Chairman, Christie's Int.
Xin Li, Deputy Chairwoman, Christie's Int.

CHRISTIE'S EMERI

SENIOR DIRECTORS

Mariolina Bassetti, Giovanna Bertazzoni,
Edouard Boccon-Gibod, Prof. Dr. Dirk Boll,
Olivier Camu, Guillaume Cerutti, President,
Roland de Lathuy, Eveline de Proyart,
Roni Gilat-Baharaff, Francis Outred,
Christiane Rantzau, Andreas Rumberg,
François de Ricqlès, Jop Ubbens, Juan Vareza

ADVISORY BOARD

Pedro Giroa, Chairman,
Patricia Barbizet, Arpad Busson, Loula Chandris,
Kemal Has Cingilloglu, Ginevra Elkann,
I. D. Fürstin zu Fürstenberg, Laurence Graff,
H.R.H. Prince Pavlos of Greece,
Marquesa de Bellavista Mrs Alicia Koplowitz,
Viscount Linley, Robert Manoukian,
Rosita, Duchess of Marlborough,
Countess Daniela Memmo d'Amelio,
Usha Mittal, Çiğdem Simavi

CHRISTIE'S UK

CHAIRMAN'S OFFICE

Orlando Rock, Chairman
Noël Annesley, Honorary Chairman;
Richard Roundell, Vice Chairman;
Robert Copley, Deputy Chairman;
The Earl of Halifax, Deputy Chairman;
Francis Russell, Deputy Chairman;
Julia Delves Broughton, James Hervey-Bathurst,
Amin Jaffer, Nicholas White, Mark Wrey

SENIOR DIRECTORS

Simon Andrews, Jeremy Bentley, Ellen Berkeley,
Jill Berry, Peter Brown, James Bruce-
Gardyne, Sophie Carter, Benjamin Clark,
Christopher Clayton-Jones, Karen Cole,
Paul Cutts, Isabelle de La Bruyere, Leila de Vos,
Paul Dickinson, Harriet Drummond,
Julie Edelson, Hugh Edmeades, David Elsworth,
David Findlay, Margaret Ford, Edmond Francey,
Daniel Gallen, Karen Harkness, Philip Harley,
James Hastie, Karl Hermans, Paul Hewitt,
Rachel Hilderley, Mark Hinton, Nick Hough,
Michael Jeha, Donald Johnston,
Erem Kassim-Lakha, Nicholas Lambourn,
William Lorimer, Catherine Manson,
Nic McElhatton (Chairman, South Kensington),
Alexandra McMorrow, Jeremy Morrison,
Nicholas Orchard, Clarice Pecori-Giraldi,
Benjamin Peronnet, Henry Pettifer, Steve Phipps,
Will Porter, Paul Raison, Tara Rastrick,
Amjad Rauf, William Robinson, Tim Schmelcher,
John Stainton, Alexis de Tiesenhausen,
Lynne Turner, Jay Vincze, Andrew Ward,
David Warren, Andrew Waters, Harry Williams-
Bulkeley, Martin Wilson, André Zlattinger

DIRECTORS

Zoe Ainscough, Cristian Albu, Marco Almeida,
Maddie Amos, Katharine Arnold, Alexis Ashot,
Alexandra Baker, Karl Barry, Sven Becker,
Jane Blood, Piers Boothman,
David Boves-Lyon, Louise Broadhurst,
Lucy Brown, Robert Brown, Lucy Campbell,
Jason Carey, Sarah Charles, Romilly Collins,
Ruth Cornett, Nicky Crosbie,
Armelle de Laubier-Rhally, Eugenio Donadoni,
Sophie DuCret, Christopher O'Neil-Dunne,
Anna Evans, Arne Everwijn, Adele Falconer,
Nick Finch, Emily Fisher, Peter Flory,
Elizabeth Floyd, Nina Foote, Christopher Forrest,
Giles Forster, Zita Gibson, Alexandra Gill,
Keith Gill, Leonie Grainger, Simon Green,
David Gregory, Mathilde Heaton,
Annabel Hesketh, Sydney Hornsby,
Peter Horwood, Kate Hunt, Simon James,
Sabine Kegel, Hans-Peter Keller, Tjabel Klok,
Robert Lagneau, Joanna Langston, Tina Law,
Adriana Leese, Tom Legh, Brandon Lindberg,
Laura Lindsay, David Llewellyn,
Murray Macaulay, Graeme Maddison,
Sarah Mansfield, Nicolas Martineau,

Roger Massey, Joy McCall, Neil McCutcheon,
Michelle McMullan, Daniel McPherson,
Neil Millen, Jeremy Morgan, Leonie Moschner,
Giles Mountain, Chris Munro, Liberté Nuti,
Beatriz Ordoñas, Rosalind Patient, Anthea Peers,
Keith Penton, Romain Pinganaud,
Sara Plumbly, Anne Qaimmaqami,
Marcus Rådecke, Pedram Rasti, Lisa Redpath,
Sumiko Roberts, Sandra Romito, Tom Rooth,
Alice de Roquemareul, François Rothlisberger,
Patrick Saich, Rosemary Scott, Tom Scott,
Nigel Shorthouse, Dominic Simpson, Nick Sims,
Clementine Sinclair, Sonal Singh, Katie Siveyer,
Nicola Steel, Kay Sutton, Cornelia Svedman,
Rakhi Talwar, Thomas Venning, Edwin Vos,
Amelia Walker, Rosanna Widen, Ben Wiggins,
Sophie Wiles, Bernard Williams,
Georgina Wilsenach, Toby Woolley, Geoff Young

ASSOCIATE DIRECTORS

Guy Agazarian, Ksenia Apukhtina, Fiona Baker,
Carin Baur, Sarah Boswell, Mark Bowis,
Phill Brakefield, Clare Bramwell, Jenny Brown,
David Cassidy, Marie-Louise Chaldecott,
John Crook, Helen Culver Smith,
Laetitia Deloye, Charlotte Delaney,
Milo Dickinson, Freddie De Rougemont,
Grant Deudney, Howard Dixon, Virginia Dulucc,
David Ellis, Antonia Essex, Kate Flitcroft,
Eva French, Pat Galligan, Elisa Galuppi,
Julia Grant, Pippa Green, Angus Granlund,
Christine Haines, Coral Hall, Charlotte Hart,
Daniel Hawkins, Evelyn Heathcoat Amory,
Anke Held, Valerie Hess, Carolyn Holmes,
Amy Huitson, Adrian Hume-Sayer, James Hyslop,
Helena Ingham, Pippa Jacomb, Guady Kelly,
Hala Khayat, Alexandra Kindermann,
Julia Kiss, Polly Knewstubb, Mark Henry Lampé,
Aoife Leach, Rob Leatham, Antoine Leboutellier,
Timothy Lloyd, Peter Mansell,
Stephanie Manstein, Amparo Martinez Rusotto,
Astrid Mascher, Georgie Mawby,
David McLachlan, Lynda McLeod,
Kateryna Merkalenko, Toby Monk,
Rosie O'Connor, Samuel Pedder-Smith,
Christopher Petre, Louise Phelps, Eugene Pooley,
Sarah Rancans, David Rees, Alexandra Reid,
Sarah Reynolds, Meghan Russell, Pat Savage,
Julie Schutz, Hannah Schweiger, Angus Scott,
Ben Slinger, James Smith, Graham Smithson,
Mark Stephen, Annelies Stevens,
Charlotte Stewart, Dean Stimpson,
Gemma Sudlow, Dominique Suiveng,
Keith Tabley, Iain Tarling, Sarah Tennant,
Timothy Triptree, Lucia Tro Santafe,
Flora Turnbull, Paul van den Biesen,
Mieke Van Embden, Ben Van Rensburg,
Lisa Varsani, Shanthi Veigas, Julie Vial,
Assunta Grafina von Moy, Anastasia von Seibold,
Zelie Walker, Tony Walshe, Gillian Ward,
Chris White, Annette Wilson, Julian Wilson,
Miriam Winson-Alio, Elissa Wood,
Suzanne Yalcin-Pennings, Charlotte Young





CHRISTIE'S

85 OLD BROMPTON ROAD LONDON SW7 3LD